

# Fas Ligand antibody [10F2] (Low endotoxin, azide free)

**Cat. No. GTX42345**

<b>Host</b>	Mouse
<b>Clonality</b>	Monoclonal
<b>Isotype</b>	IgG1
<b>Applications</b>	FCM, IP, ELISA, in vivo, Neutralizing/Inhibition
<b>Reactivity</b>	Human

References ( 2 )

Package

100 µg

## Applications

### Application Note

\*Optimal dilutions/concentrations should be determined by the researcher.

Suggested dilution	Recommended dilution
FCM	1/25-1/50
IP	Assay dependent
ELISA	Assay dependent
in vivo	Assay dependent
Neutralizing/Inhibition	Assay dependent

**Note : Use 10µl of the suggested working dilution to label 10<sup>6</sup> cells in 100µl.**

**Mouse anti Human CD178 antibody, clone 10F2 is reported to block the activity of Fas ligand (Legembre et al. 2002).**

Not tested in other applications.

### Product Note

This antibody recognizes the human CD178 cell surface antigen, a 40kDa glycoprotein also known as Fas ligand (CD95L). Clone 10F2 is reported to block the activity of Fas ligand (Legembre et al. 2002).

## Properties

<b>Form</b>	Liquid
<b>Buffer</b>	PBS
<b>Preservative</b>	No preservatives
<b>Storage</b>	Store as concentrated solution. Centrifuge briefly prior to opening vial. For short-term storage (1-2 weeks), store at 4°C. For long-term storage, aliquot and store at -20°C or below. Avoid multiple freeze-thaw cycles.
<b>Concentration</b>	1.0 mg/ml (Please refer to the vial label for the specific concentration.)
<b>Purification</b>	Protein G purified From tissue culture supernatant
<b>Endotoxin</b>	< 0.01 EU/µg (determined by the LAL assay)



For full product information, images and publications, please visit our [website](#).

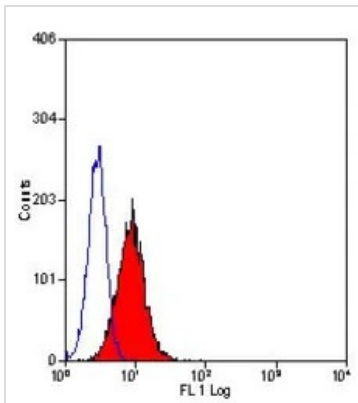
**Conjugation**

Unconjugated

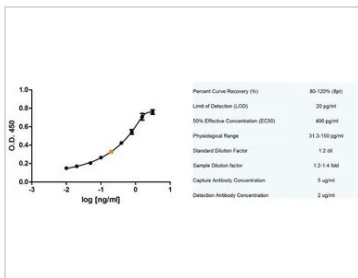
**Note**

For laboratory research use only. Not for any clinical, therapeutic, or diagnostic use in humans or animals. Not for animal or human consumption.

Purchasers shall not, and agree not to enable third parties to, analyze, copy, reverse engineer or otherwise attempt to determine the structure or sequence of the product.

**DATA IMAGES**

**GTX42345 FCM Image**

FACS analysis of Fas Ligand transfected CHO cells using GTX42345 Fas Ligand antibody [10F2] (Low endotoxin, azide free).


**GTX42345 ELISA Image**

Sandwich ELISA analysis of human Fas Ligand binding using Mouse anti Human Fas Ligand (GTX42344) as a capture reagent and Mouse anti Human Fas Ligand(GTX42345) as a detection reagent with purified human Fas Ligand as antigen for the generation of a standard curve. Plasma (orange) sample is displayed at 1:2 dilution.



For full product information, images and publications, please visit our [website](https://www.genetex.com).