

CD169 antibody [ED3]

Cat. No. GTX42356

Host	Mouse
Clonality	Monoclonal
Isotype	IgG2a
Applications	ICC/IF, IHC-Fr, FCM, IP
Reactivity	Rat

Package
250 µg

Applications

Application Note

*Optimal dilutions/concentrations should be determined by the researcher.

Suggested dilution	Recommended dilution
ICC/IF	Assay dependent
IHC-Fr	1/50-1/250
FCM	1/500
IP	Assay dependent

Note : Use 10µl of the suggested working dilution to label 10⁶ cells in 100µl.

Not tested in other applications.

Properties

Form	Liquid
Buffer	PBS
Preservative	0.09% Sodium azide
Storage	Store as concentrated solution. Centrifuge briefly prior to opening vial. For short-term storage (1-2 weeks), store at 4°C. For long-term storage, aliquot and store at -20°C or below. Avoid multiple freeze-thaw cycles.
Concentration	0.5 mg/ml (Please refer to the vial label for the specific concentration.)
Immunogen	Rat Spleen cell homogenate
Purification	Protein A purified
Conjugation	Unconjugated

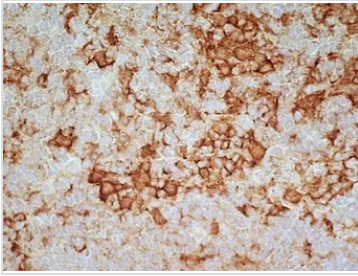
Note

For laboratory research use only. Not for any clinical, therapeutic, or diagnostic use in humans or animals. Not for animal or human consumption.

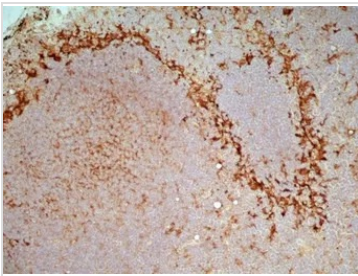
Purchasers shall not, and agree not to enable third parties to, analyze, copy, reverse engineer or otherwise attempt to determine the structure or sequence of the product.



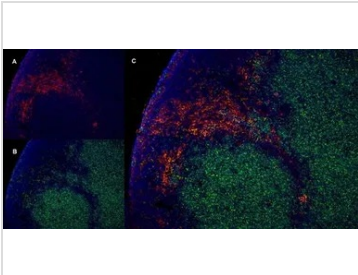
For full product information, images and publications, please visit our [website](#).

DATA IMAGES

GTX42356 IHC-Fr Image

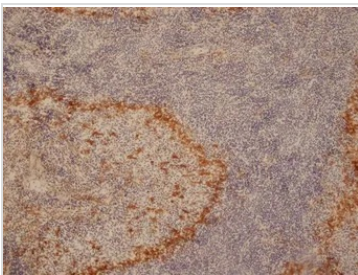
IHC-Fr analysis of rat lymph node tissue using GTX42356 CD169 antibody [ED3].


GTX42356 IHC-Fr Image

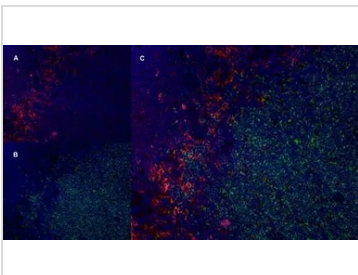
IHC-Fr analysis of rat lymph node tissue using GTX42356 CD169 antibody [ED3].


GTX42356 IHC-Fr Image

IHC-Fr staining of rat lymph node with Mouse anti Rat CD169, clone ED3 (GTX42356), red in A and Mouse anti Rat CD4, clone W3/25, green in B. C is the merged image with nuclei counter-stained blue using DAPI.
Low power


GTX42356 IHC-Fr Image

IHC-Fr analysis of rat spleen tissue using GTX42356 CD169 antibody [ED3].


GTX42356 IHC-Fr Image

IHC-Fr staining of rat lymph node with Mouse anti Rat CD169, clone ED3 (GTX42356), red in A and Mouse anti Rat CD4, clone W3/25, green in B. C is the merged image with nuclei counter-stained blue using DAPI.
Medium power



For full product information, images and publications, please visit our [website](https://www.genetex.com).