

CD169 antibody [3D6.112] (Low endotoxin, azide free)

Cat. No. GTX42362

Host	Rat
Clonality	Monoclonal
Isotype	IgG2a
Applications	ICC/IF, IHC-Fr, FCM
Reactivity	Mouse

Package
500 µg

Applications

Application Note

*Optimal dilutions/concentrations should be determined by the researcher.

Suggested dilution	Recommended dilution
ICC/IF	Assay dependent
IHC-Fr	1/50-1/100
FCM	1/100-1/1,000

**Note : We recommend using fixation with either 2% paraformaldehyde or ethanol for optimal results.
Use 10µl of the suggested working dilution to label 10⁶ cells in 100µl.**

Not tested in other applications.

Properties

Form	Liquid
Buffer	PBS
Preservative	No preservatives
Storage	Store as concentrated solution. Centrifuge briefly prior to opening vial. For short-term storage (1-2 weeks), store at 4°C. For long-term storage, aliquot and store at -20°C or below. Avoid multiple freeze-thaw cycles.
Concentration	1 mg/ml (Please refer to the vial label for the specific concentration.)
Immunogen	Purified murine sialoadhesin.
Purification	Protein G purified From tissue culture supernatant
Endotoxin	< 0.01 EU/µg (determined by the LAL assay)
Conjugation	Unconjugated



For full product information, images and publications, please visit our [website](#).

For laboratory research use only. Not for any clinical, therapeutic, or diagnostic use in humans or animals. Not for animal or human consumption.

Note

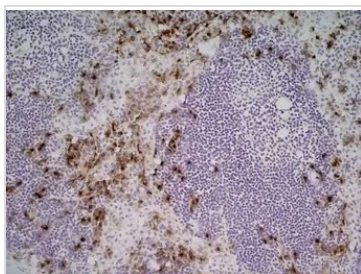
Purchasers shall not, and agree not to enable third parties to, analyze, copy, reverse engineer or otherwise attempt to determine the structure or sequence of the product.

DATA IMAGES



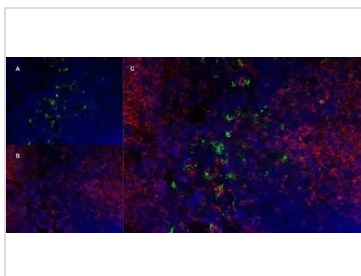
GTX42362 IHC-Fr Image

IHC-Fr analysis of mouse lymph node tissue using GTX42362 CD169 antibody [3D6.112] (Low endotoxin, azide free).



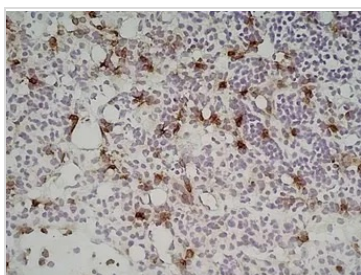
GTX42362 IHC-Fr Image

IHC-Fr analysis of mouse lymph node tissue using GTX42362 CD169 antibody [3D6.112] (Low endotoxin, azide free).



GTX42362 IHC-Fr Image

IHC-Fr staining of mouse lymph node with Rat anti Mouse CD169 antibody clone 3D6.112 (GTX42362), green in A and Rat anti Mouse CD8 antibody, clone YTS105.18, red in B. C is the merged image with nuclei counterstained blue using DAPI. Low power



GTX42362 IHC-Fr Image

IHC-Fr analysis of mouse lymph node tissue using GTX42362 CD169 antibody [3D6.112] (Low endotoxin, azide free).



For full product information, images and publications, please visit our [website](#).