

## CD169 antibody [3D6.112]

Cat. No. GTX42363

Host	Rat
Clonality	Monoclonal
Isotype	IgG2a
Applications	ICC/IF, IHC-Fr, FCM
Reactivity	Mouse

Package  
200 µg

## Applications

## Application Note

\*Optimal dilutions/concentrations should be determined by the researcher.

Suggested dilution	Recommended dilution
ICC/IF	Assay dependent
IHC-Fr	1/50-1/100
FCM	1/100-1/1,000

**Note : We recommend using fixation with either 2% paraformaldehyde or ethanol for optimal results.**

**Use 10µl of the suggested working dilution to label 10<sup>6</sup> cells in 100µl.**

Not tested in other applications.

## Properties

Form	Liquid
Buffer	PBS
Preservative	0.09% Sodium azide
Storage	Store as concentrated solution. Centrifuge briefly prior to opening vial. For short-term storage (1-2 weeks), store at 4°C. For long-term storage, aliquot and store at -20°C or below. Avoid multiple freeze-thaw cycles.
Concentration	1.0 mg/ml (Please refer to the vial label for the specific concentration.)
Immunogen	Purified murine sialoadhesin.
Purification	Protein G purified From tissue culture supernatant
Conjugation	Unconjugated

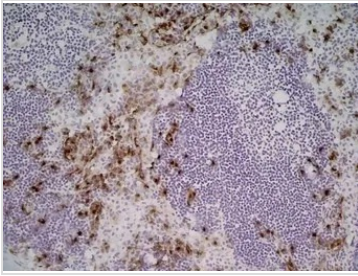
## Note

For laboratory research use only. Not for any clinical, therapeutic, or diagnostic use in humans or animals. Not for animal or human consumption.

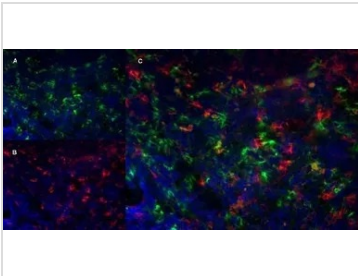
Purchasers shall not, and agree not to enable third parties to, analyze, copy, reverse engineer or otherwise attempt to determine the structure or sequence of the product.



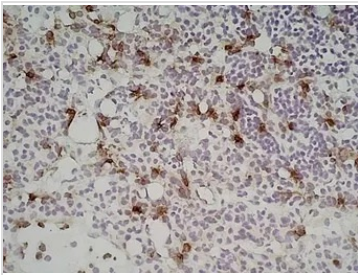
For full product information, images and publications, please visit our [website](#).

**DATA IMAGES**

**GTX42363 IHC-Fr Image**

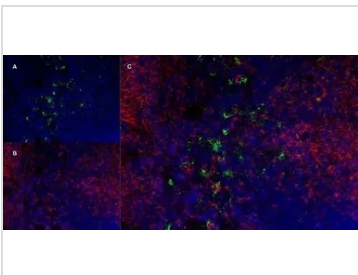
IHC-Fr analysis of mouse lymph node tissue using GTX42363 CD169 antibody [3D6.112].


**GTX42363 IHC-Fr Image**

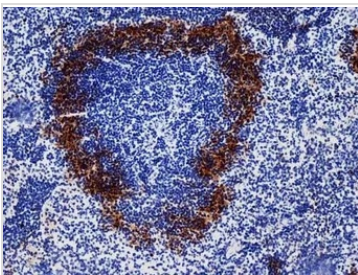
IHC-Fr staining of mouse lymph node with Rat anti Mouse CD169 antibody clone 3D6.112 (GTX42363), green in A and Rat anti Mouse CD8 antibody, clone YTS105.18, red in B. C is the merged image with nuclei counterstained blue using DAPI. High power


**GTX42363 IHC-Fr Image**

IHC-Fr analysis of mouse lymph node tissue using GTX42363 CD169 antibody [3D6.112].


**GTX42363 IHC-Fr Image**

IHC-Fr staining of mouse lymph node with Rat anti Mouse CD169 antibody clone 3D6.112 (GTX42363), green in A and Rat anti Mouse CD8 antibody, clone YTS105.18, red in B. C is the merged image with nuclei counterstained blue using DAPI. Low power


**GTX42363 IHC-Fr Image**

IHC-Fr analysis of mouse spleen tissue using GTX42363 CD169 antibody [3D6.112].



For full product information, images and publications, please visit our [website](https://www.genetex.com).