

CD163 antibody [EDHu-1]

Cat. No. GTX42365

Host	Mouse
Clonality	Monoclonal
Isotype	IgG1
Applications	WB, ICC/IF, IHC-P, IHC-Fr, FCM, ELISA, Immunoassay
Reactivity	Human, Mouse, Sheep, Bovine, Guinea pig, Pig, Rhesus Monkey

References (3)

Package

100 µg

Applications

Application Note

*Optimal dilutions/concentrations should be determined by the researcher.

Suggested dilution	Recommended dilution
WB	Assay dependent
ICC/IF	Assay dependent
IHC-P	Assay dependent
IHC-Fr	Assay dependent
FCM	Assay dependent
ELISA	Assay dependent
Immunoassay	Assay dependent

Not tested in other applications.

Calculated MW 125 kDa. ([Note](#))

Product Note

The Binding of EDHu-1 occurs via the N-terminal region of CD163 containing the first three scavenger receptor, Cysteine-rich, SRCR domains the third domain being critical as, cleavage of this domain at the major cleavage site ASP-265 abrogates binding to the N-terminal fragment.

Properties

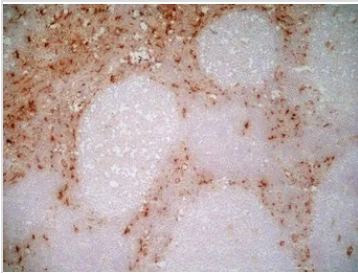
Form	Liquid
Buffer	PBS
Preservative	0.09% Sodium azide
Storage	Store as concentrated solution. Centrifuge briefly prior to opening vial. For short-term storage (1-2 weeks), store at 4°C. For long-term storage, aliquot and store at -20°C or below. Avoid multiple freeze-thaw cycles.
Concentration	1.0 mg/ml (Please refer to the vial label for the specific concentration.)
Immunogen	Leucocytes harvested from the pleural cavity of patients with idiopathic spontaneous pneumothorax



For full product information, images and publications, please visit our [website](#).

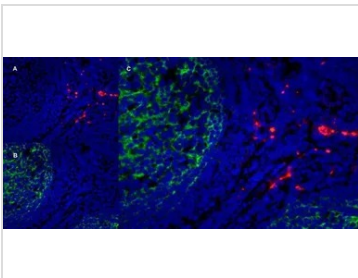
Purification	Protein A purified From tissue culture supernatant
Conjugation	Unconjugated
Note	For laboratory research use only. Not for any clinical, therapeutic, or diagnostic use in humans or animals. Not for animal or human consumption. Purchasers shall not, and agree not to enable third parties to, analyze, copy, reverse engineer or otherwise attempt to determine the structure or sequence of the product.

DATA IMAGES



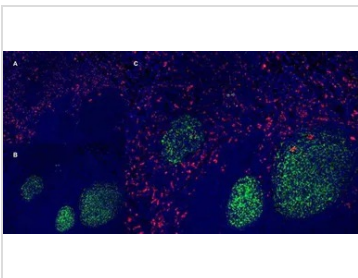
GTX42365 IHC-Fr Image

IHC-Fr analysis of human tonsil tissue using GTX42365 CD163 antibody [EDHu-1].



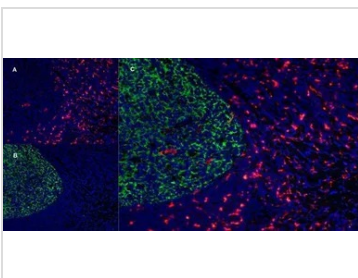
GTX42365 IHC-Fr Image

IHC-Fr staining of a human tonsil with Mouse anti Human CD163 antibody, clone EDHu-1 (GTX42365), red in A and Mouse anti Human CD21 antibody, clone LB21 (GTX74728), green in B. C is the merged image with nuclei counterstained blue using DAPI. High power



GTX42365 IHC-Fr Image

IHC-Fr staining of a human tonsil with Mouse anti Human CD163 antibody, clone EDHu-1 (GTX42365), red in A and Mouse anti Human CD21 antibody, clone LB21 (GTX74728), green in B. C is the merged image with nuclei counterstained blue using DAPI. Low power



GTX42365 IHC-Fr Image

IHC-Fr staining of a human tonsil with Mouse anti Human CD163 antibody, clone EDHu-1 (GTX42365), red in A and Mouse anti Human CD21 antibody, clone LB21 (GTX74728), green in B. C is the merged image with nuclei counterstained blue using DAPI. Medium power



For full product information, images and publications, please visit our [website](https://www.genetex.com).