

CD163 antibody [ED2]

Cat. No. GTX42366

| | |
|--------------|------------------------------------|
| Host | Mouse |
| Clonality | Monoclonal |
| Isotype | IgG1 |
| Applications | WB, ICC/IF, IHC-P, IHC-Fr, FCM, IP |
| Reactivity | Mouse, Rat |

References (3)

Package

250 µg

Applications

Application Note

*Optimal dilutions/concentrations should be determined by the researcher.

| Suggested dilution | Recommended dilution |
|--------------------|----------------------|
| WB | Assay dependent |
| ICC/IF | Assay dependent |
| IHC-P | Assay dependent |
| IHC-Fr | 1/50-1/100 |
| FCM | 1/10-1/100 |
| IP | Assay dependent |

Note : Use 10µl of the suggested working dilution to label 10⁶ cells in 100µl.

Not tested in other applications.

Product Note This antibody recognises the rat ED2 cell surface glycoprotein (Dijkstra et al. 1985).

Properties

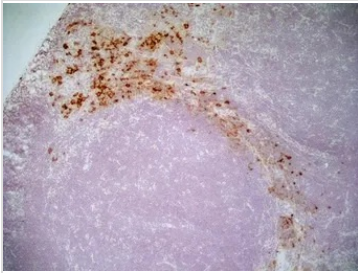
| | |
|---------------|--|
| Form | Liquid |
| Buffer | PBS |
| Preservative | 0.09% Sodium azide |
| Storage | Store as concentrated solution. Centrifuge briefly prior to opening vial. For short-term storage (1-2 weeks), store at 4°C. For long-term storage, aliquot and store at -20°C or below. Avoid multiple freeze-thaw cycles. |
| Concentration | 0.5 mg/ml (Please refer to the vial label for the specific concentration.) |
| Immunogen | Rat Spleen cell homogenate. |
| Purification | Protein A purified From tissue culture supernatant |
| Conjugation | Unconjugated |

For full product information, images and publications, please visit our [website](#).

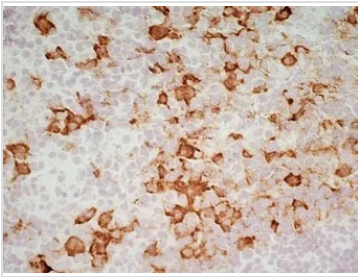
For laboratory research use only. Not for any clinical, therapeutic, or diagnostic use in humans or animals. Not for animal or human consumption.

Note

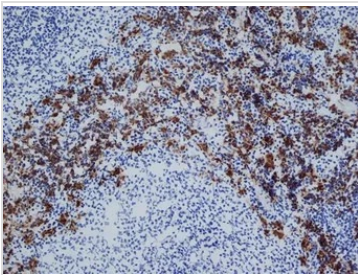
Purchasers shall not, and agree not to enable third parties to, analyze, copy, reverse engineer or otherwise attempt to determine the structure or sequence of the product.

DATA IMAGES

GTX42366 IHC-Fr Image

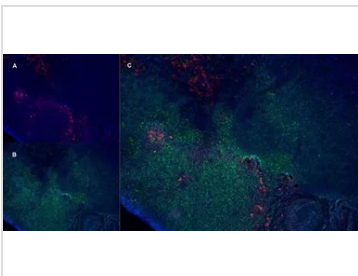
IHC-Fr analysis of rat lymph node tissue using GTX42366 CD163 antibody [ED2].


GTX42366 IHC-Fr Image

IHC-Fr analysis of rat lymph node tissue using GTX42366 CD163 antibody [ED2].


GTX42366 IHC-Fr Image

IHC-Fr analysis of rat spleen tissue using GTX42366 CD163 antibody [ED2].


GTX42366 IHC-Fr Image

IHC-Fr staining of rat lymph node with Mouse anti Rat CD163 antibody (GTX42366), red in A and Mouse anti Rat CD8, green in B. C is the merged image with nuclei counter-stained blue using DAPI. Low power



For full product information, images and publications, please visit our [website](#).