

## CD163 antibody [ED2]

Cat. No. GTX42367

Host	Mouse
Clonality	Monoclonal
Isotype	IgG1
Applications	WB, ICC/IF, IHC-P, IHC-Fr, FCM, IP
Reactivity	Mouse, Rat

References ( 4 )

Package

100 µg

## Applications

## Application Note

\*Optimal dilutions/concentrations should be determined by the researcher.

Suggested dilution	Recommended dilution
WB	Assay dependent
ICC/IF	1/50-1/100
IHC-P	Assay dependent
IHC-Fr	Assay dependent
FCM	1/10-1/100
IP	Assay dependent

**Note : Use 10µl of the suggested working dilution to label 10<sup>6</sup> cells in 100µl.**

Not tested in other applications.

## Properties

Form	Liquid
Buffer	PBS
Preservative	0.09% Sodium azide
Storage	Store as concentrated solution. Centrifuge briefly prior to opening vial. For short-term storage (1-2 weeks), store at 4°C. For long-term storage, aliquot and store at -20°C or below. Avoid multiple freeze-thaw cycles.
Concentration	0.5 mg/ml (Please refer to the vial label for the specific concentration.)
Immunogen	Rat Spleen cell homogenate.
Purification	Protein A purified From tissue culture supernatant
Conjugation	Unconjugated

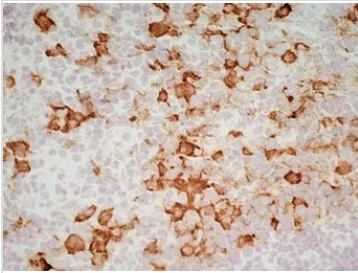


For full product information, images and publications, please visit our [website](#).

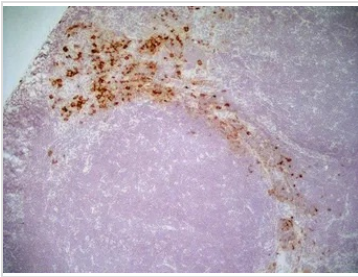
For laboratory research use only. Not for any clinical, therapeutic, or diagnostic use in humans or animals. Not for animal or human consumption.

**Note**

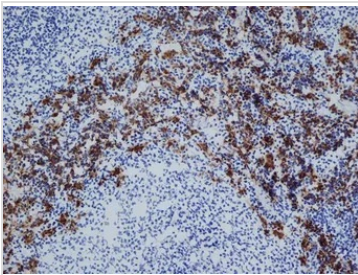
Purchasers shall not, and agree not to enable third parties to, analyze, copy, reverse engineer or otherwise attempt to determine the structure or sequence of the product.

**DATA IMAGES**

**GTX42367 IHC-Fr Image**

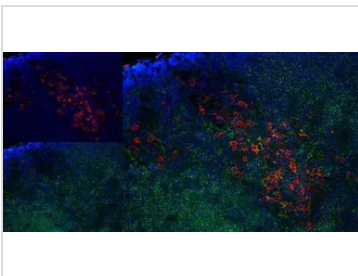
IHC-Fr analysis of rat lymph node tissue using GTX42367 CD163 antibody [ED2].


**GTX42367 IHC-Fr Image**

IHC-Fr analysis of rat lymph node tissue using GTX42367 CD163 antibody [ED2].


**GTX42367 IHC-Fr Image**

IHC-Fr analysis of rat spleen tissue using GTX42367 CD163 antibody [ED2].


**GTX42367 IHC-Fr Image**

IHC-Fr staining of rat lymph node with Mouse anti Rat CD163 antibody (GTX42367), red an A and Mouse anti Rat CD8, green in B. C is the merged image with nuclei counter-stained blue using DAPI. High power



For full product information, images and publications, please visit our [website](#).