

CD16 antibody [DJ130c]

Cat. No. GTX42379

Host	Mouse
Clonality	Monoclonal
Isotype	IgG1
Applications	IHC-P, IHC-Fr, FCM
Reactivity	Human, Macaque

Package
200 µg

Applications

Application Note

*Optimal dilutions/concentrations should be determined by the researcher.

Suggested dilution	Recommended dilution
IHC-P	Assay dependent
IHC-Fr	Assay dependent
FCM	Assay dependent

Not tested in other applications.

Product Note

This antibody recognizes both CD16a and CD16b and has been demonstrated to cross-react with CD16 from rhesus macaques, *Macaca mulatta* (Xu et al. 2012)

Properties

Form	Liquid
Buffer	PBS
Preservative	0.09% Sodium azide
Storage	Store as concentrated solution. Centrifuge briefly prior to opening vial. For short-term storage (1-2 weeks), store at 4°C. For long-term storage, aliquot and store at -20°C or below. Avoid multiple freeze-thaw cycles.
Concentration	1.0 mg/ml (Please refer to the vial label for the specific concentration.)
Purification	Protein G purified From tissue culture supernatant
Conjugation	Unconjugated

Note

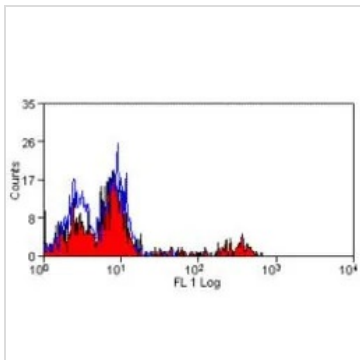
For laboratory research use only. Not for any clinical, therapeutic, or diagnostic use in humans or animals. Not for animal or human consumption.

Purchasers shall not, and agree not to enable third parties to, analyze, copy, reverse engineer or otherwise attempt to determine the structure or sequence of the product.



For full product information, images and publications, please visit our [website](#).

DATA IMAGES

**GTX42379 FCM Image**

FACS analysis of human peripheral blood lymphocytes using GTX42379 CD16 antibody [DJ130c].



For full product information, images and publications, please visit our [website](#).