

CD14 antibody [TÜK4]

Cat. No. GTX42421

Host	Mouse
Clonality	Monoclonal
Isotype	IgG2a
Applications	WB, FCM, ELISA
Reactivity	Human, Rabbit, Goat, Sheep, Bovine, Cat, Dog, Pig, Cynomolgus monkey, Llama, Mink

References (1)

Package

100 µg

Applications

Application Note

*Optimal dilutions/concentrations should be determined by the researcher.

Suggested dilution	Recommended dilution
WB	Assay dependent
FCM	1/50-1/200
ELISA	Assay dependent

Note : Use 5µl of the suggested working dilution to label 10⁶ cells or 100µl whole blood.

Not tested in other applications.

Calculated MW 40 kDa. ([Note](#))

Properties

Form	Liquid
Buffer	PBS
Preservative	0.09% Sodium azide
Storage	Store as concentrated solution. Centrifuge briefly prior to opening vial. For short-term storage (1-2 weeks), store at 4°C. For long-term storage, aliquot and store at -20°C or below. Avoid multiple freeze-thaw cycles.
Concentration	1.0 mg/ml (Please refer to the vial label for the specific concentration.)
Purification	Protein A purified From tissue culture supernatant
Conjugation	Unconjugated



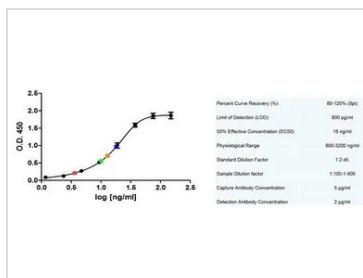
For full product information, images and publications, please visit our [website](#).

For laboratory research use only. Not for any clinical, therapeutic, or diagnostic use in humans or animals. Not for animal or human consumption.

Note

Purchasers shall not, and agree not to enable third parties to, analyze, copy, reverse engineer or otherwise attempt to determine the structure or sequence of the product.

DATA IMAGES



GTX42421 ELISA Image

Sandwich ELISA analysis of Human CD14 binding using Mouse anti CD14 antibody, clone MEM-18 (GTX75930) as a capture reagent and biotinylated Mouse anti Human CD14 antibody, clone Tuk4(GTX42421) as a detection reagent. Serum samples diluted 1:200 and 1:400 are shown green and red respectively, while plasma samples also diluted 1:200 and 1:400 are blue and orange respectively



For full product information, images and publications, please visit our [website](#).