

CD14 antibody [TÜK4] (Low endotoxin, azide free)

Cat. No. GTX42422

Host	Mouse
Clonality	Monoclonal
Isotype	IgG2a
Applications	WB, FCM, ELISA, Neutralizing/Inhibition, Sandwich ELISA
Reactivity	Human, Rabbit, Goat, Sheep, Bovine, Cat, Dog, Pig, Cynomolgus monkey, Llama, Mink

References (1)

Package

100 µg

Applications

Application Note

*Optimal dilutions/concentrations should be determined by the researcher.

Suggested dilution	Recommended dilution
WB	Assay dependent
FCM	1/100-1/200
ELISA	Assay dependent
Neutralizing/Inhibition	Assay dependent
Sandwich ELISA	Assay dependent

Note : Use 10µl of the suggested working dilution to label 10⁶ cells or 100µl whole blood.**Mouse anti human CD14 antibody, clone TÜK4 has been shown to block SDF-induced chemotaxis of U937 cells in a dose –dependent manner (Yang et al. 2003).****Capture : GTX28103, Detection : GTX42422**

Not tested in other applications.

Calculated MW	40 kDa. (Note)
Product Note	This antibody recognizes the human CD14 cell surface antigen.

Properties

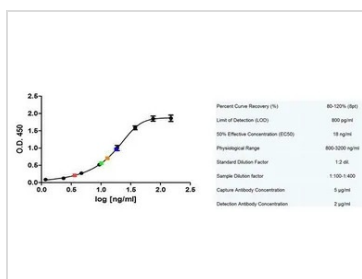
Form	Liquid
Buffer	PBS
Preservative	No preservatives
Storage	Store as concentrated solution. Centrifuge briefly prior to opening vial. For short-term storage (1-2 weeks), store at 4°C. For long-term storage, aliquot and store at -20°C or below. Avoid multiple freeze-thaw cycles.
Concentration	1.0 mg/ml (Please refer to the vial label for the specific concentration.)



For full product information, images and publications, please visit our [website](#).

Purification	Protein A purified From tissue culture supernatant
Endotoxin	< 0.01 EU/μg (determined by the LAL assay)
Conjugation	Unconjugated
Note	For laboratory research use only. Not for any clinical, therapeutic, or diagnostic use in humans or animals. Not for animal or human consumption. Purchasers shall not, and agree not to enable third parties to, analyze, copy, reverse engineer or otherwise attempt to determine the structure or sequence of the product.

DATA IMAGES



GTX42422 ELISA Image

Sandwich ELISA analysis of Human CD14 binding using Mouse anti CD14 antibody, clone MEM-18 (GTX28103) as a capture reagent and biotinylated Mouse anti Human CD14 antibody, clone Tuk4(GTX42422) as a detection reagent. Serum samples diluted 1:200 and 1:400 are shown green and red respectively, while plasma samples also diluted 1:200 and 1:400 are blue and orange respectively



For full product information, images and publications, please visit our [website](#).