

CD13 antibody [R3-63] (Low endotoxin, azide free)

Cat. No. GTX42442

Host	Rat
Clonality	Monoclonal
Isotype	IgG2a
Applications	ICC/IF, IHC-P, IHC-Fr, FCM, Neutralizing/Inhibition
Reactivity	Mouse

Package
500 µg

Applications

Application Note

*Optimal dilutions/concentrations should be determined by the researcher.

Suggested dilution	Recommended dilution
ICC/IF	Assay dependent
IHC-P	Assay dependent
IHC-Fr	Assay dependent
FCM	1/50-1/100
Neutralizing/Inhibition	Assay dependent

Note : Use 10µl of the suggested working dilution to label 10⁶ cells in 100µl.**Rat anti Mouse CD13 antibody, clone R3-63 has been reported to block mouse APN enzyme activity (Hansen et al. 1993).**

Not tested in other applications.

Properties

Form	Liquid
Buffer	PBS
Preservative	No preservative
Storage	Store as concentrated solution. Centrifuge briefly prior to opening vial. For short-term storage (1-2 weeks), store at 4°C. For long-term storage, aliquot and store at -20°C or below. Avoid multiple freeze-thaw cycles.
Concentration	1.0 mg/ml (Please refer to the vial label for the specific concentration.)
Immunogen	Mouse intestinal CD13
Purification	Protein A purified
Endotoxin	< 0.01 EU/µg (determined by the LAL assay)
Conjugation	Unconjugated

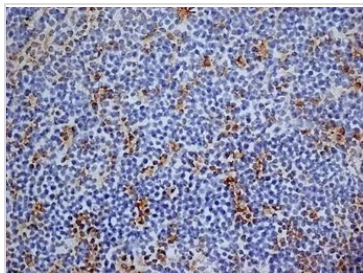
For full product information, images and publications, please visit our [website](#).

For laboratory research use only. Not for any clinical, therapeutic, or diagnostic use in humans or animals. Not for animal or human consumption.

Note

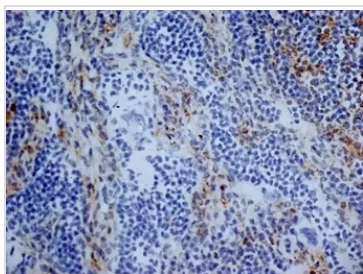
Purchasers shall not, and agree not to enable third parties to, analyze, copy, reverse engineer or otherwise attempt to determine the structure or sequence of the product.

DATA IMAGES



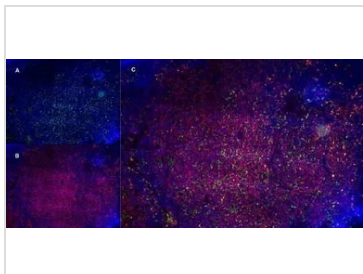
GTX42442 IHC-Fr Image

IHC-Fr analysis of mouse lymph node tissue using GTX42442 CD13 antibody [R3-63] (Low endotoxin, azide free).



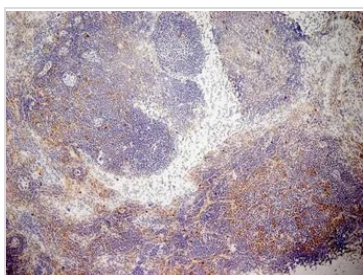
GTX42442 IHC-Fr Image

IHC-Fr analysis of mouse lymph node tissue using GTX42442 CD13 antibody [R3-63] (Low endotoxin, azide free).



GTX42442 IHC-Fr Image

IHC-Fr staining of a mouse lymph node with Rat anti Mouse CD13 antibody, clone R3-63 (GTX42442), green in A and Rat anti Mouse CD8, clone YTS105.18 (GTX74642), red in B. C is the merged image with nuclei counterstained blue using DAPI. Low power



GTX42442 IHC-Fr Image

IHC-Fr analysis of mouse lymph node tissue using GTX42442 CD13 antibody [R3-63] (Low endotoxin, azide free).



For full product information, images and publications, please visit our [website](https://www.genetex.com).