

EasyBlocker

Cat. No. GTX425858

Applications WB

References (13)

Package

60 g, 12 g

PRODUCT

Summary EasyBlocker for EasyBlot kit

Applications

Application Note

*Optimal dilutions/concentrations should be determined by the researcher.

Suggested dilution Recommended dilution

WB Assay dependent

Not tested in other applications.

Properties

Form Lyophilized powder

Buffer PBS

Preservative No preservatives

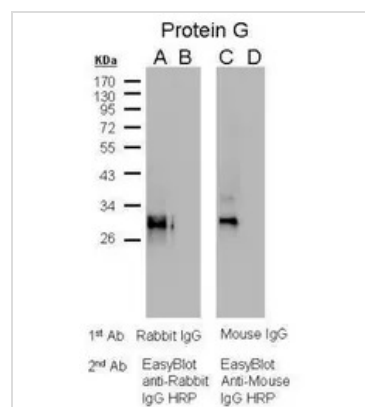
Storage Store at 4°C.

Note

For laboratory research use only. Not for any clinical, therapeutic, or diagnostic use in humans or animals. Not for animal or human consumption.

Purchasers shall not, and agree not to enable third parties to, analyze, copy, reverse engineer or otherwise attempt to determine the structure or sequence of the product.

DATA IMAGES

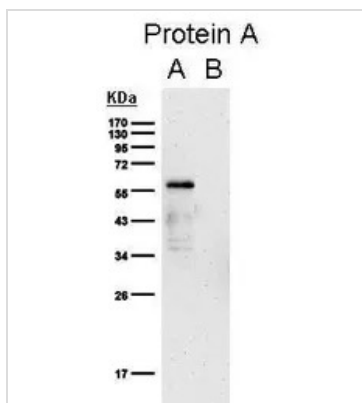


GTX425858 WB Image

EasyBlocker Western blot analysis of protein G sample. Membrane was blocked with 5% milk (A and C) or EasyBlocker (B and D). A and B: 1st antibody: Rabbit IgG 2nd antibody: EasyBlot anti-Rabbit IgG HRP C and D: 1st antibody: Mouse IgG 2nd antibody: EasyBlot anti-Mouse IgG HRP



For full product information, images and publications, please visit our [website](#).



GTX425858 WB Image

EasyBlocker Western blot analysis of protein A sample. Membrane was blocked with (A) 5% milk or (B) EasyBlocker. Rabbit anti-GST antibody was then used as 1st antibody followed by EasyBlot anti-Rabbit IgG HRP as second step reagent.



For full product information, images and publications, please visit our [website](https://www.genetex.com).