

Calreticulin antibody [FMC 75]

Cat. No. GTX42683

Host	Mouse
Clonality	Monoclonal
Isotype	IgG1
Applications	WB, ICC/IF, FCM, ELISA, IHC
Reactivity	Human, Hamster, Monkey

References (3)

Package

100 µg

Applications

Application Note

*Optimal dilutions/concentrations should be determined by the researcher.

Suggested dilution	Recommended dilution
WB	0.5 µg/ml
ICC/IF	Assay dependent
FCM	1:100
ELISA	Assay dependent
IHC	2 µg/ml

Not tested in other applications.

Calculated MW 48 kDa. ([Note](#))

Properties

Form	Liquid
Buffer	PBS, 50% Glycerol, 0.1mM PMSF
Preservative	No preservatives
Storage	Store as concentrated solution. Centrifuge briefly prior to opening vial. For short-term storage (1-2 weeks), store at 4°C. For long-term storage, aliquot and store at -20°C or below. Avoid multiple freeze-thaw cycles.
Concentration	1 mg/ml (Please refer to the vial label for the specific concentration.)
Immunogen	Calreticulin-maltose binding fusion protein
Purification	Protein G purified
Conjugation	Unconjugated

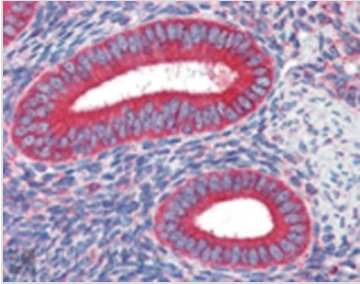


For full product information, images and publications, please visit our [website](#).

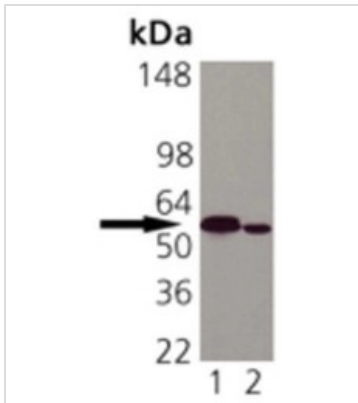
For laboratory research use only. Not for any clinical, therapeutic, or diagnostic use in humans or animals. Not for animal or human consumption.

Note
Purchasers shall not, and agree not to enable third parties to, analyze, copy, reverse engineer or otherwise attempt to determine the structure or sequence of the product.

DATA IMAGES

**GTX42683 IHC Image**

Immunohistochemistry analysis of human uterus tissue stained with Calreticulin, mAb (FMC 75) at 10µg/ml.

**GTX42683 WB Image**

Western blot analysis of Calreticulin:

Lane 1: HeLa (Heat Shocked)

Lane 2: Vero



For full product information, images and publications, please visit our [website](#).