

Aspergillus antibody [WF-AF-1]

Cat. No. GTX42724

Host	Mouse
Clonality	Monoclonal
Isotype	IgM
Applications	WB, IHC-P, IP
Reactivity	Aspergillus

Package
250 µg

Applications

Application Note

*Optimal dilutions/concentrations should be determined by the researcher.

Suggested dilution	Recommended dilution
WB	Assay dependent
IHC-P	1/300
IP	Assay dependent

Note : This product requires protein digestion pre-treatment of paraffin sections e.g. trypsin or pronase.

Not tested in other applications.

Product Note

This antibody recognizes members of the Aspergillus spp. including A. flavus and A. niger, reacting strongly with walls and septae, and to a lesser extent within the cytoplasm of hyphae. This antibody does not bind to water-soluble somatic antigens (WSSA) of Aspergillus spp., but may react with galactomannans of members of the genus Penicillium.

Properties

Form	Liquid
Buffer	PBS
Preservative	0.09% Sodium azide
Storage	Store as concentrated solution. Centrifuge briefly prior to opening vial. For short-term storage (1-2 weeks), store at 4°C. For long-term storage, aliquot and store at -20°C or below. Avoid multiple freeze-thaw cycles.
Concentration	1.0 mg/ml (Please refer to the vial label for the specific concentration.)
Immunogen	Wall fraction (WF) of Aspergillus fumigatus
Purification	Ammonium sulphate precipitation From tissue culture supernatant
Conjugation	Unconjugated



For full product information, images and publications, please visit our [website](#).

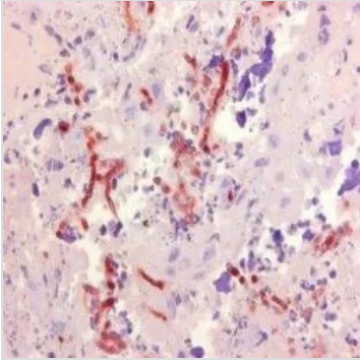
Date 2026 / 05 / 05 Page 1 of 2

For laboratory research use only. Not for any clinical, therapeutic, or diagnostic use in humans or animals. Not for animal or human consumption.

Note

Purchasers shall not, and agree not to enable third parties to, analyze, copy, reverse engineer or otherwise attempt to determine the structure or sequence of the product.

DATA IMAGES



GTX42724 IHC-P Image

IHC analysis of human placenta tissue using GTX42724 Aspergillus antibody [WF-AF-1].



For full product information, images and publications, please visit our [website](#).