

# Aspergillus antibody [WF-AF-1]

**Cat. No. GTX42724**

<b>Host</b>	Mouse
<b>Clonality</b>	Monoclonal
<b>Isotype</b>	IgM
<b>Applications</b>	WB, IHC-P, IP, ELISA
<b>Reactivity</b>	Aspergillus

**Package**  
250 µg

## Applications

### Application Note

\*Optimal dilutions/concentrations should be determined by the researcher.

Suggested dilution	Recommended dilution
WB	Assay dependent
IHC-P	1/300
IP	Assay dependent
ELISA	Assay dependent

**Note : This product requires protein digestion pre-treatment of paraffin sections e.g. trypsin or pronase.**

Not tested in other applications.

### Product Note

This antibody recognizes members of the Aspergillus spp. including A. flavus and A. niger, reacting strongly with walls and septae, and to a lesser extent within the cytoplasm of hyphae. This antibody does not bind to water-soluble somatic antigens (WSSA) of Aspergillus spp., but may react with galactomannans of members of the genus Penicillium.

## Properties

<b>Form</b>	Liquid
<b>Buffer</b>	PBS
<b>Preservative</b>	0.09% Sodium azide
<b>Storage</b>	Store as concentrated solution. Centrifuge briefly prior to opening vial. For short-term storage (1-2 weeks), store at 4°C. For long-term storage, aliquot and store at -20°C or below. Avoid multiple freeze-thaw cycles.
<b>Concentration</b>	1.0 mg/ml (Please refer to the vial label for the specific concentration.)
<b>Immunogen</b>	Wall fraction (WF) of Aspergillus fumigatus
<b>Purification</b>	Ammonium sulphate precipitation From tissue culture supernatant
<b>Conjugation</b>	Unconjugated



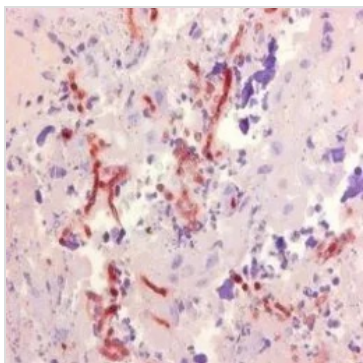
For full product information, images and publications, please visit our [website](#).

## Note

For laboratory research use only. Not for any clinical, therapeutic, or diagnostic use in humans or animals. Not for animal or human consumption.

Purchasers shall not, and agree not to enable third parties to, analyze, copy, reverse engineer or otherwise attempt to determine the structure or sequence of the product.

## DATA IMAGES



### GTX42724 IHC-P Image

IHC analysis of human placenta tissue using GTX42724 Aspergillus antibody [WF-AF-1].



For full product information, images and publications, please visit our [website](#).