

## AMPK alpha 1 + AMPK alpha 2 antibody [34.2]

Cat. No. GTX42789

<b>Host</b>	Mouse
<b>Clonality</b>	Monoclonal
<b>Isotype</b>	IgG2a
<b>Applications</b>	WB, ICC/IF, IHC-Fr, IP, ELISA
<b>Reactivity</b>	Human, Mouse, Rat, Drosophila, Bovine

References ( 1 )

Package

100 µg

## Applications

## Application Note

\*Optimal dilutions/concentrations should be determined by the researcher.

Suggested dilution	Recommended dilution
WB	1/100-1/1,000
ICC/IF	Assay dependent
IHC-Fr	Assay dependent
IP	Assay dependent
ELISA	Assay dependent

**Note : This antibody detects a band of approximately 63kDa in rat brain cell lysates.**

Not tested in other applications.

**Product Note** This antibody recognizes both the alpha 1 and the alpha 2 isoforms of AMP-activated protein kinase (AMPK).

## Properties

<b>Form</b>	Liquid
<b>Buffer</b>	PBS
<b>Preservative</b>	0.09% Sodium azide
<b>Storage</b>	Store as concentrated solution. Centrifuge briefly prior to opening vial. For short-term storage (1-2 weeks), store at 4°C. For long-term storage, aliquot and store at -20°C or below. Avoid multiple freeze-thaw cycles.
<b>Concentration</b>	1.0 mg/ml (Please refer to the vial label for the specific concentration.)
<b>Immunogen</b>	29 amino acid peptide within the N-terminal catalytic domain of Drosophila AMPK alpha.
<b>Purification</b>	Protein G purified
<b>Conjugation</b>	Unconjugated

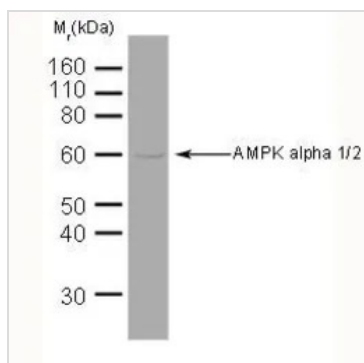
For full product information, images and publications, please visit our [website](#).

For laboratory research use only. Not for any clinical, therapeutic, or diagnostic use in humans or animals. Not for animal or human consumption.

## Note

Purchasers shall not, and agree not to enable third parties to, analyze, copy, reverse engineer or otherwise attempt to determine the structure or sequence of the product.

## DATA IMAGES



## GTX42789 WB Image

WB analysis of human brain tissue lysate using GTX42789 AMPK alpha 1/2 antibody [34.2].



For full product information, images and publications, please visit our [website](#).