

Alkaline Phosphatase antibody [BGN/03/662]

Cat. No. GTX42809

Host	Mouse
Clonality	Monoclonal
Isotype	IgG1
Applications	WB, ELISA
Reactivity	Human, Rat, Bacteria

References (3)

Package

200 µg

Applications

Application Note

*Optimal dilutions/concentrations should be determined by the researcher.

Suggested dilution	Recommended dilution
WB	Assay dependent
ELISA	Assay dependent

Not tested in other applications.

Product Note This antibody recognizes bone specific alkaline phosphatase.

Properties

Form	Liquid
Buffer	PBS
Preservative	0.09% Sodium azide
Storage	Store as concentrated solution. Centrifuge briefly prior to opening vial. For short-term storage (1-2 weeks), store at 4°C. For long-term storage, aliquot and store at -20°C or below. Avoid multiple freeze-thaw cycles.
Concentration	1.0 mg/ml (Please refer to the vial label for the specific concentration.)
Immunogen	Alkaline phosphatase from human bone.
Purification	Protein A purified
Conjugation	Unconjugated

Note

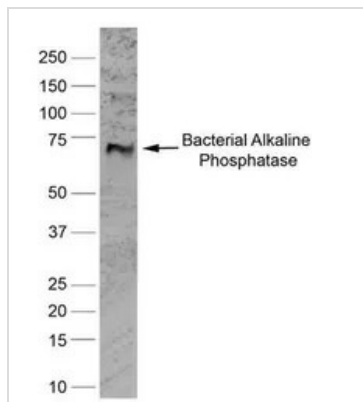
For laboratory research use only. Not for any clinical, therapeutic, or diagnostic use in humans or animals. Not for animal or human consumption.

Purchasers shall not, and agree not to enable third parties to, analyze, copy, reverse engineer or otherwise attempt to determine the structure or sequence of the product.



For full product information, images and publications, please visit our [website](#).

DATA IMAGES



GTX42809 WB Image

WB analysis of bacterial alkaline phosphatase recombinant protein using GTX42809 Alkaline Phosphatase antibody [BGN/03/662].



For full product information, images and publications, please visit our [website](#).