

EGFR (phospho Tyr1173) antibody [9H2]

Cat. No. GTX42900

Host	Mouse
Clonality	Monoclonal
Isotype	IgG1
Applications	WB, ICC/IF, IP, ELISA
Reactivity	Human

Package

50 µg

Applications

Application Note

*Optimal dilutions/concentrations should be determined by the researcher.

Suggested dilution	Recommended dilution
WB	Assay dependent
ICC/IF	Assay dependent
IP	Assay dependent
ELISA	Assay dependent

Not tested in other applications.

Calculated MW 134 kDa. ([Note](#))**Product Note** The full-length EGFR includes the 24 aa signal peptide that is cleaved during EGFR maturation. The Tyr1173 of mature EGFR is equivalent to Tyr1197 of uncleaved EGFR.

Properties

Form	Liquid
Buffer	PBS, PEG, Sucrose
Preservative	0.09% Sodium azide
Storage	Store as concentrated solution. Centrifuge briefly prior to opening vial. For short-term storage (1-2 weeks), store at 4°C. For long-term storage, aliquot and store at -20°C or below. Avoid multiple freeze-thaw cycles.
Concentration	100 µg/ml (Please refer to the vial label for the specific concentration.)
Purification	Purified IgG From tissue culture supernatant
Conjugation	Unconjugated

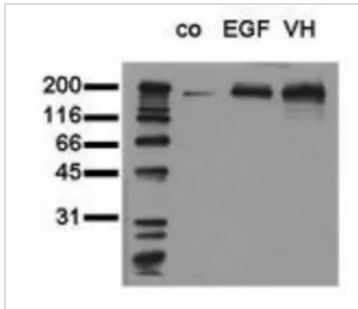
For full product information, images and publications, please visit our [website](#).

For laboratory research use only. Not for any clinical, therapeutic, or diagnostic use in humans or animals. Not for animal or human consumption.

Note

Purchasers shall not, and agree not to enable third parties to, analyze, copy, reverse engineer or otherwise attempt to determine the structure or sequence of the product.

DATA IMAGES



GTx42900 WB Image

WB analysis of mock control (co), EGF stimulated (EGF) or pervanadate treated (VH) A549 cell lysate using GTx42900 EGFR (phospho Tyr1173) antibody [9H2].

Dilution : 0.5 µg/mL



For full product information, images and publications, please visit our [website](#).