

CD16 antibody [G7] (PE)

Cat. No. GTX42935

Host	Mouse
Clonality	Monoclonal
Isotype	IgG1
Application	FACS
Reactivity	Pig

Package
100 test

APPLICATION

Application Note

*Optimal dilutions/concentrations should be determined by the researcher.

Suggested dilution	Recommended dilution
FACS	Neat

Note : Use 10 μ l of the suggested working dilution to label 10⁶ cells in 100 μ l.

Not tested in other applications.

PROPERTIES

Form	Liquid
Buffer	PBS, 1% BSA, 5% Sucrose
Preservative	0.09% Sodium azide
Storage	Store as concentrated solution. Centrifuge briefly prior to opening vial. Store at 4°C. DO NOT FREEZE. Protect from light.
Concentration	Batch dependent (Please refer to the vial label for the specific concentration.)
Immunogen	Porcine peripheral blood leucocytes
Purification	Protein G purified
Conjugation	Phycoerythrin (PE)

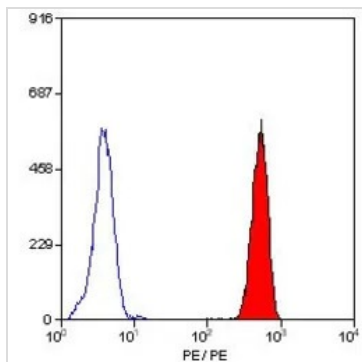
Note

For laboratory research use only. Not for any clinical, therapeutic, or diagnostic use in humans or animals. Not for animal or human consumption.

Purchasers shall not, and agree not to enable third parties to, analyze, copy, reverse engineer or otherwise attempt to determine the structure or sequence of the product.



For full product information, images and publications, please visit our [website](#).

DATA IMAGES

GTX42935 FACS Image

FACS analysis of pig peripheral blood granulocytes using GTX42935 CD16 antibody [G7] (PE).



For full product information, images and publications, please visit our [website](https://www.genetex.com).