

MHC Class II DQ/DR (polymorphic) antibody [28.1] (PE)

Cat. No. GTX42948

Host	Mouse
Clonality	Monoclonal
Isotype	IgG1
Applications	FCM
Reactivity	Goat, Sheep, Bovine

Package
100 test

Applications

Application Note

*Optimal dilutions/concentrations should be determined by the researcher.

Suggested dilution	Recommended dilution
FCM	Neat-1/10

Note : Use 10µl of the suggested working dilution to label 10⁶ cells in 100µl.

Not tested in other applications.

Product Note This antibody recognizes a polymorphic epitope on ovine MHC class II DQ and DR molecules.

Properties

Form	Liquid
Buffer	PBS, 1% BSA, 5% Sucrose
Preservative	0.09% Sodium azide
Storage	Store as concentrated solution. Centrifuge briefly prior to opening vial. Store at 4°C. DO NOT FREEZE. Protect from light.
Concentration	Batch dependent (Please refer to the vial label for the specific concentration.)
Immunogen	Ovine alveolar macrophages.
Purification	Protein G purified From tissue culture supernatant
Conjugation	Phycoerythrin (PE) Wavelength

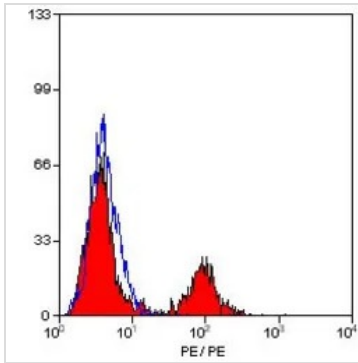
Note For laboratory research use only. Not for any clinical, therapeutic, or diagnostic use in humans or animals. Not for animal or human consumption.

Note Purchasers shall not, and agree not to enable third parties to, analyze, copy, reverse engineer or otherwise attempt to determine the structure or sequence of the product.



For full product information, images and publications, please visit our [website](#).

DATA IMAGES

**GTX42948 FCM Image**

FACS analysis of sheep peripheral blood lymphocytes using GTX42948 MHC Class II DQ/DR (polymorphic) antibody [28.1] (PE).



For full product information, images and publications, please visit our [website](#).