

# LTBR antibody [5G11b] (PE)

**Cat. No. GTX42955**

<b>Host</b>	Rat
<b>Clonality</b>	Monoclonal
<b>Isotype</b>	IgG2a
<b>Application</b>	FACS
<b>Reactivity</b>	Mouse

**Package**  
100 test

## APPLICATION

### Application Note

\*Optimal dilutions/concentrations should be determined by the researcher.

Suggested dilution	Recommended dilution
FACS	Neat

**Note : Use 10µl of the suggested working dilution to label 10<sup>6</sup> cells in 100µl.**

Not tested in other applications.

**Calculated MW** 45 kDa. ( [Note](#) )

## PROPERTIES

<b>Form</b>	Liquid
<b>Buffer</b>	PBS, 1% BSA, 5% Sucrose
<b>Preservative</b>	0.09% Sodium azide
<b>Storage</b>	Store as concentrated solution. Centrifuge briefly prior to opening vial. Store at 4°C. DO NOT FREEZE. Protect from light.
<b>Concentration</b>	Batch dependent (Please refer to the vial label for the specific concentration.)
<b>Immunogen</b>	Recombinant extracellular domain of Lymphotoxin beta Receptor.
<b>Purification</b>	Protein G purified From tissue culture supernatant
<b>Conjugation</b>	Phycoerythrin (PE)

### Note

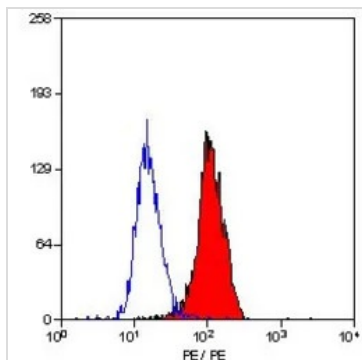
For laboratory research use only. Not for any clinical, therapeutic, or diagnostic use in humans or animals. Not for animal or human consumption.

Purchasers shall not, and agree not to enable third parties to, analyze, copy, reverse engineer or otherwise attempt to determine the structure or sequence of the product.



For full product information, images and publications, please visit our [website](#).

## DATA IMAGES



### GTX42955 FACS Image

FACS analysis of WEH1 cells using GTX42955 LTBR antibody [5G11b] (PE).



For full product information, images and publications, please visit our [website](https://www.genetex.com).

Date 2024 / 04 / 29 Page 2 of 2