

## Ly6c antibody [ER-MP20] (PE)

**Cat. No. GTX42957**

<b>Host</b>	Rat
<b>Clonality</b>	Monoclonal
<b>Isotype</b>	IgG2a
<b>Applications</b>	FCM
<b>Reactivity</b>	Mouse

**Package**  
100 test

## Applications

**Application Note**

\*Optimal dilutions/concentrations should be determined by the researcher.

Suggested dilution	Recommended dilution
FCM	Neat-1/5

**Note : Use 10µl of the suggested working dilution to label 10<sup>6</sup> cells in 100µl.**

Not tested in other applications.

## Properties

<b>Form</b>	Liquid
<b>Buffer</b>	PBS, 1% BSA, 5% Sucrose
<b>Preservative</b>	0.09% Sodium azide
<b>Storage</b>	Store as concentrated solution. Centrifuge briefly prior to opening vial. Store at 4°C. DO NOT FREEZE. Protect from light.
<b>Concentration</b>	Batch dependent (Please refer to the vial label for the specific concentration.)
<b>Immunogen</b>	Balb/c macrophage precursor cell hybrids.
<b>Purification</b>	Protein G purified From tissue culture supernatant
<b>Conjugation</b>	Phycoerythrin (PE) <a href="#">Wavelength</a>

**Note**

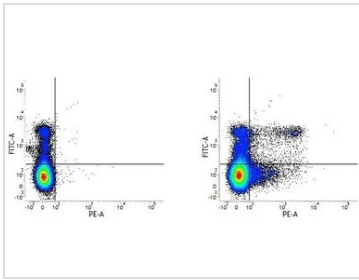
For laboratory research use only. Not for any clinical, therapeutic, or diagnostic use in humans or animals. Not for animal or human consumption.

Purchasers shall not, and agree not to enable third parties to, analyze, copy, reverse engineer or otherwise attempt to determine the structure or sequence of the product.



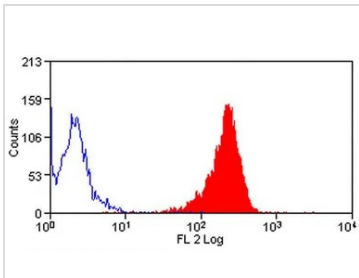
For full product information, images and publications, please visit our [website](#).

DATA IMAGES



**GTX42957 FCM Image**

Figure A. FITC conjugated Rat anti Mouse CD8 and RPE conjugated Rat IgG2a isotype control. Figure B. FITC conjugated Rat anti Mouse CD8 and RPE conjugated Rat anti Mouse Ly-6C (GTX42957). All experiments performed on mouse splenocytes.



**GTX42957 FCM Image**

FACS analysis of mouse peripheral blood granulocytes using GTX42957 Ly-6C antibody [ER-MP20] (PE).



For full product information, images and publications, please visit our [website](#).