

Ly-6B.2 antibody [7/4] (PE)

Cat. No. GTX42959

Host	Rat
Clonality	Monoclonal
Isotype	IgG2a
Applications	FCM
Reactivity	Mouse

References (1)
Package
100 test

Applications

Application Note

*Optimal dilutions/concentrations should be determined by the researcher.

Suggested dilution	Recommended dilution
FCM	Neat-1/10

Note : Use 10µl of the suggested working dilution to label 10⁶ cells in 100µl.

Not tested in other applications.

Product Note

This antibody recognizes the Ly-6B.2 antigen in 129J; AKR; C57BL/6; C57BL/10; C58; DBA/2; NZB; NZW; SJL; MFI; Swiss (PO) Strains whilst A2G; A/Sn; ASW; BALB/c; C3H/HEH: CBA.T6T6 are negative or demonstrate very weak reactivity (Hirsch and Gordon 1982).

Properties

Form	Liquid
Buffer	PBS, 1% BSA, 5% Sucrose
Preservative	0.09% Sodium azide
Storage	Store as concentrated solution. Centrifuge briefly prior to opening vial. Store at 4°C. DO NOT FREEZE. Protect from light.
Concentration	Batch dependent (Please refer to the vial label for the specific concentration.)
Immunogen	Cultured bone marrow cells
Purification	Protein G purified From tissue culture supernatant
Conjugation	Phycoerythrin (PE) Wavelength

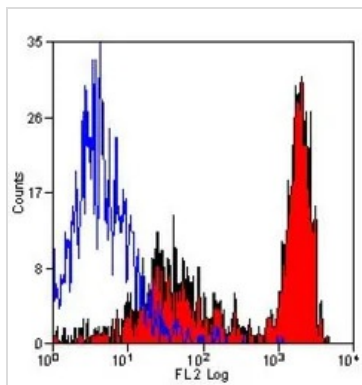
Note

For laboratory research use only. Not for any clinical, therapeutic, or diagnostic use in humans or animals. Not for animal or human consumption.

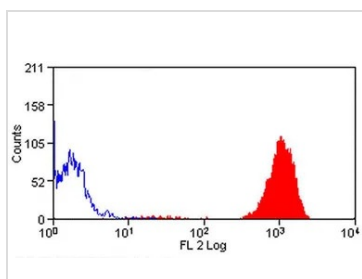
Purchasers shall not, and agree not to enable third parties to, analyze, copy, reverse engineer or otherwise attempt to determine the structure or sequence of the product.



For full product information, images and publications, please visit our [website](#).

DATA IMAGES

GTX42959 FCM Image

FACS analysis of mouse peripheral blood granulocytes using GTX42959 Ly-6B.2 antibody [7/4] (PE).


GTX42959 FCM Image

FACS analysis of C57Bl/6 mouse peripheral granulocytes using GTX42959 Ly-6B.2 antibody [7/4] (PE).



For full product information, images and publications, please visit our [website](https://www.genetex.com).