

## CD8 antibody [YCATE55.9] (PE)

Cat. No. GTX43022

Host	Rat
Clonality	Monoclonal
Isotype	IgG1
Application	FACS
Reactivity	Dog

**Package**  
50 test

## APPLICATION

## Application Note

\*Optimal dilutions/concentrations should be determined by the researcher.

Suggested dilution	Recommended dilution
FACS	Neat

**Note : Use 10 $\mu$ l of the suggested working dilution to label 10<sup>6</sup> cells in 100 $\mu$ l.**

Not tested in other applications.

## PROPERTIES

Form	Liquid
Buffer	PBS, 1% BSA, 5% Sucrose
Preservative	0.09% Sodium azide
Storage	Store as concentrated solution. Centrifuge briefly prior to opening vial. Store at 4°C. DO NOT FREEZE. Protect from light.
Concentration	Batch dependent (Please refer to the vial label for the specific concentration.)
Immunogen	Canine CD8 alpha chimaeric human IgG1 Fc fusion protein.
Purification	Protein G purified From tissue culture supernatant
Conjugation	Phycoerythrin (PE)

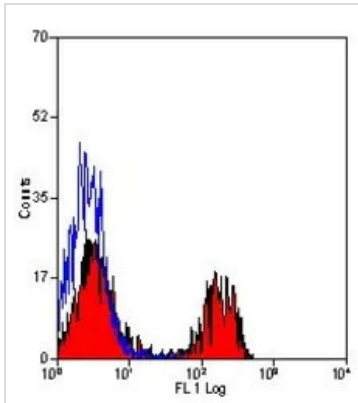
## Note

For laboratory research use only. Not for any clinical, therapeutic, or diagnostic use in humans or animals. Not for animal or human consumption.

Purchasers shall not, and agree not to enable third parties to, analyze, copy, reverse engineer or otherwise attempt to determine the structure or sequence of the product.



For full product information, images and publications, please visit our [website](#).

**DATA IMAGES**

**GTX43022 FACS Image**

FACS analysis of dog peripheral lymphocytes using GTX43022 CD8 antibody [YCATE55.9] (PE).



For full product information, images and publications, please visit our [website](#).