

CD62P antibody [Psel.KO.2.5] (PE)

Cat. No. GTX43040

| | |
|---------------------|-------------------|
| Host | Mouse |
| Clonality | Monoclonal |
| Isotype | IgG1 |
| Applications | FCM |
| Reactivity | Human, Sheep, Pig |

Package
100 test

Applications

Application Note

*Optimal dilutions/concentrations should be determined by the researcher.

| Suggested dilution | Recommended dilution |
|--------------------|----------------------|
| FCM | Neat |

Note : Use 10µl of the suggested working dilution to label 10⁶ cells in 100µl.

Not tested in other applications.

Properties

| | |
|----------------------|--|
| Form | Liquid |
| Buffer | PBS, 1% BSA, 5% Sucrose |
| Preservative | 0.09% Sodium azide |
| Storage | Store as concentrated solution. Centrifuge briefly prior to opening vial. Store at 4°C. DO NOT FREEZE. Protect from light. |
| Concentration | Batch dependent (Please refer to the vial label for the specific concentration.) |
| Immunogen | CD62P transfected 300.19 cells. |
| Purification | Protein G purified From tissue culture supernatant |
| Conjugation | Phycoerythrin (PE) Wavelength |

Note

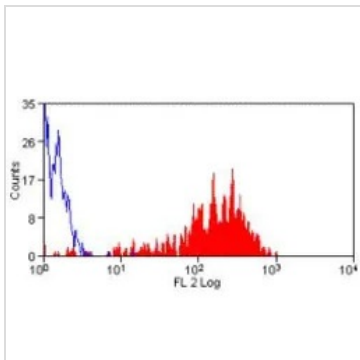
For laboratory research use only. Not for any clinical, therapeutic, or diagnostic use in humans or animals. Not for animal or human consumption.

Purchasers shall not, and agree not to enable third parties to, analyze, copy, reverse engineer or otherwise attempt to determine the structure or sequence of the product.



For full product information, images and publications, please visit our [website](#).

DATA IMAGES

**GTX43040 FCM Image**

FACS analysis of thrombin activated human peripheral blood platelets using GTX43040 CD62P antibody [Psel.KO.2.5] (PE).



For full product information, images and publications, please visit our [website](#).