

## CD36 antibody [MF3] (PE)

**Cat. No. GTX43097**

<b>Host</b>	Rat
<b>Clonality</b>	Monoclonal
<b>Isotype</b>	IgG2a
<b>Applications</b>	FCM
<b>Reactivity</b>	Mouse

References ( 2 )

Package

100 test

## Applications

**Application Note**

\*Optimal dilutions/concentrations should be determined by the researcher.

Suggested dilution	Recommended dilution
FCM	Neat

**Note : Use 10µl of the suggested working dilution to label 10<sup>6</sup> cells in 100µl.**

Not tested in other applications.

## Properties

<b>Form</b>	Liquid
<b>Buffer</b>	PBS, 1% BSA, 5% Sucrose
<b>Preservative</b>	0.09% Sodium azide
<b>Storage</b>	Store as concentrated solution. Centrifuge briefly prior to opening vial. Store at 4°C. DO NOT FREEZE. Protect from light.
<b>Concentration</b>	Batch dependent (Please refer to the vial label for the specific concentration.)
<b>Immunogen</b>	IL-4 treated murine thioglycollate-elicited peritoneal macrophages.
<b>Purification</b>	Protein G purified
<b>Conjugation</b>	Phycoerythrin (PE) <a href="#">Wavelength</a>

**Note**

For laboratory research use only. Not for any clinical, therapeutic, or diagnostic use in humans or animals. Not for animal or human consumption.

Purchasers shall not, and agree not to enable third parties to, analyze, copy, reverse engineer or otherwise attempt to determine the structure or sequence of the product.

For full product information, images and publications, please visit our [website](#).

## DATA IMAGES

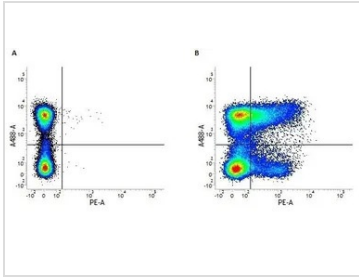
**GTX43097 FCM Image**

Figure A. A488 conjugated Rat anti Mouse CD45R and RPE Rat IgG2a isotype control (GTX74769). Figure B. A488 conjugated Rat anti Mouse CD45R and RPE conjugated Rat anti Mouse CD36 (GTX43097). All experiments performed on mouse splenocytes



For full product information, images and publications, please visit our [website](#).