

CD21 antibody [CA2.1D6] (PE)

Cat. No. GTX43150

Host	Mouse
Clonality	Monoclonal
Isotype	IgG1
Applications	FCM
Reactivity	Cat, Dog, Horse, Raccoon

References (1)

Package

50 test

Applications

Application Note

*Optimal dilutions/concentrations should be determined by the researcher.

Suggested dilution	Recommended dilution
FCM	Neat

Note : Use 10µl of the suggested working dilution to label 10⁶ cells or 100µl whole blood. GTX43150 should NOT be used with GTX43631 (mouse anti canine CD3), in dual colour flow cytometry, due to non-specific interactions between the two reagents.

Not tested in other applications.

Properties

Form	Liquid
Buffer	PBS, 1% BSA
Preservative	0.09% Sodium azide
Storage	Store as concentrated solution. Centrifuge briefly prior to opening vial. Store at 4°C. DO NOT FREEZE. Protect from light.
Concentration	Batch dependent (Please refer to the vial label for the specific concentration.)
Purification	Protein G purified
Conjugation	Phycoerythrin (PE) Wavelength

Note

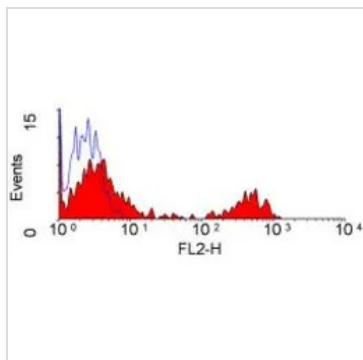
For laboratory research use only. Not for any clinical, therapeutic, or diagnostic use in humans or animals. Not for animal or human consumption.

Purchasers shall not, and agree not to enable third parties to, analyze, copy, reverse engineer or otherwise attempt to determine the structure or sequence of the product.



For full product information, images and publications, please visit our [website](#).

DATA IMAGES



GTX43150 FCM Image

FACS analysis of dog peripheral blood lymphocytes using GTX43150 CD21 antibody [CA2.1D6] (PE).



For full product information, images and publications, please visit our [website](#).