

## CD1w2 antibody [CC20] (PE)

**Cat. No. GTX43167**

<b>Host</b>	Mouse
<b>Clonality</b>	Monoclonal
<b>Isotype</b>	IgG2a
<b>Application</b>	FACS
<b>Reactivity</b>	Goat, Sheep, Bovine, Cat, Dog, Horse

**Package**  
100 test

## APPLICATION

**Application Note**

\*Optimal dilutions/concentrations should be determined by the researcher.

Suggested dilution	Recommended dilution
FACS	Neat-1/5

**Note : Use 10 $\mu$ l of the suggested working dilution to label 10<sup>6</sup> cells in 100 $\mu$ l.**

Not tested in other applications.

## PROPERTIES

<b>Form</b>	Liquid
<b>Buffer</b>	PBS, 1% BSA, 5% Sucrose
<b>Preservative</b>	0.09% Sodium azide
<b>Storage</b>	Store as concentrated solution. Centrifuge briefly prior to opening vial. Store at 4°C. DO NOT FREEZE. Protect from light.
<b>Concentration</b>	Batch dependent (Please refer to the vial label for the specific concentration.)
<b>Purification</b>	Protein G purified From tissue culture supernatant
<b>Conjugation</b>	Phycoerythrin (PE)

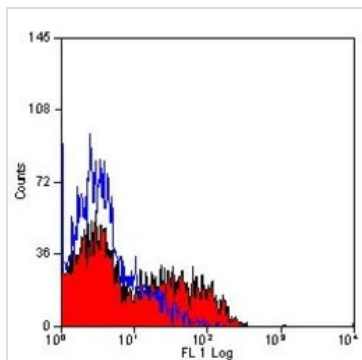
**Note** For laboratory research use only. Not for any clinical, therapeutic, or diagnostic use in humans or animals. Not for animal or human consumption.

Purchasers shall not, and agree not to enable third parties to, analyze, copy, reverse engineer or otherwise attempt to determine the structure or sequence of the product.



For full product information, images and publications, please visit our [website](#).

## DATA IMAGES



### GTX43167 FACS Image

FACS analysis of bovine peripheral blood lymphocytes using GTX43167 CD1w2 antibody [CC20] (PE).



For full product information, images and publications, please visit our [website](#).