

## Dengue virus Type 2 Envelope protein antibody [B932M]

Cat. No. GTX43296

Host	Mouse
Clonality	Monoclonal
Isotype	IgG1
Applications	WB, ICC/IF, IP
Reactivity	Dengue virus 2

References ( 1 )

Package

500 µg

## Applications

## Application Note

\*Optimal dilutions/concentrations should be determined by the researcher.

Suggested dilution	Recommended dilution
WB	Assay dependent
ICC/IF	1:1000
IP	Assay dependent

Not tested in other applications.

**Calculated MW** 54 kDa. ( [Note](#) )

**Product Note** Dengue Virus Type 2 envelope protein. Minimal crossreactivity with other Dengue subtypes.

## Properties

Form	Liquid
Buffer	PBS
Preservative	No preservatives
Storage	Store as concentrated solution. Centrifuge briefly prior to opening vial. For short-term storage (1-2 weeks), store at 4°C. For long-term storage, aliquot and store at -20°C or below. Avoid multiple freeze-thaw cycles.
Concentration	1 mg/ml (Please refer to the vial label for the specific concentration.)
Immunogen	Dengue infected cell Lysate.
Purification	Purified by Ion Exchange Chromatography
Conjugation	Unconjugated



For full product information, images and publications, please visit our [website](#).

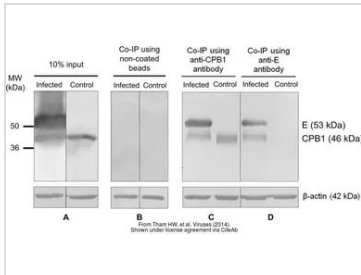
Date 2025 / 09 / 04 Page 1 of 2

For laboratory research use only. Not for any clinical, therapeutic, or diagnostic use in humans or animals. Not for animal or human consumption.

**Note**

Purchasers shall not, and agree not to enable third parties to, analyze, copy, reverse engineer or otherwise attempt to determine the structure or sequence of the product.

## DATA IMAGES



### GTx43296 WB IP Image

The data was published in the journal *Viruses* in 2014. [PMID: 25521592](https://pubmed.ncbi.nlm.nih.gov/25521592/)



For full product information, images and publications, please visit our [website](https://www.genetex.com).