

SLA Class I antibody [JM1E3] (FITC)

Cat. No. GTX43353

Host	Mouse
Clonality	Monoclonal
Isotype	IgG1
Application	FACS
Reactivity	Human, Pig

Reference (1)

Package

100 µg

APPLICATION

Application Note

*Optimal dilutions/concentrations should be determined by the researcher.

Suggested dilution	Recommended dilution
FACS	Neat

Note : Use 10µl of the suggested working dilution to label 10⁶ cells in 100µl.

Not tested in other applications.

Product Note This antibody recognizes a monomorphic epitope expressed by porcine MHC class I molecules (SLA - 1).

PROPERTIES

Form	Liquid
Buffer	PBS, 1% BSA
Preservative	0.09% Sodium azide
Storage	Store as concentrated solution. Centrifuge briefly prior to opening vial. For short-term storage (1-2 weeks), store at 4°C. For long-term storage, aliquot and store at -20°C or below. Avoid multiple freeze-thaw cycles. Protect from light.
Concentration	0.1 mg/ml (Please refer to the vial label for the specific concentration.)
Immunogen	Porcine peripheral blood mononuclear cells.
Purification	Protein A purified From tissue culture supernatant
Conjugation	Fluorescein isothiocyanate (FITC)

Note

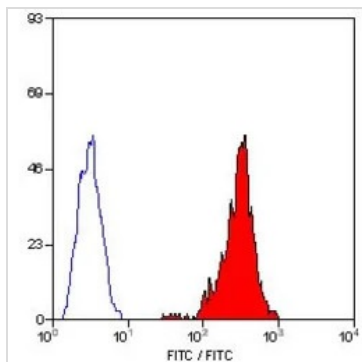
For laboratory research use only. Not for any clinical, therapeutic, or diagnostic use in humans or animals. Not for animal or human consumption.

Purchasers shall not, and agree not to enable third parties to, analyze, copy, reverse engineer or otherwise attempt to determine the structure or sequence of the product.



For full product information, images and publications, please visit our [website](#).

DATA IMAGES



GTX43353 FACS Image

FACS analysis of pig peripheral blood lymphocytes using GTX43353 SLA Class I antibody [JM1E3] (FITC).



For full product information, images and publications, please visit our [website](#).