

## CD5 antibody [1H6/8] (FITC)

Cat. No. GTX43358

Host	Mouse
Clonality	Monoclonal
Isotype	IgG2a
Applications	WB, FCM, IP
Reactivity	Pig

Package  
50 µg

## Applications

## Application Note

\*Optimal dilutions/concentrations should be determined by the researcher.

Suggested dilution	Recommended dilution
WB	Assay dependent
FCM	Neat-1/10
IP	Assay dependent

**Note : Use 10µl of the suggested working dilution to label 10<sup>6</sup> cells in 100µl.**

Not tested in other applications.

## Product Note

This antibody recognizes pig CD5. No reactivity was noted with canine, bovine, equine or human tissue samples (Doménech et al. 2003).

## Properties

Form	Liquid
Buffer	PBS, 1% BSA
Preservative	0.09% Sodium azide
Storage	Store as concentrated solution. Centrifuge briefly prior to opening vial. For short-term storage (1-2 weeks), store at 4°C. For long-term storage, aliquot and store at -20°C or below. Avoid multiple freeze-thaw cycles. Protect from light.
Concentration	0.1 mg/ml (Please refer to the vial label for the specific concentration.)
Immunogen	ConA/PMA activated porcine peripheral blood cells.
Purification	Protein G purified From tissue culture supernatant
Conjugation	Fluorescein isothiocyanate (FITC) <a href="#">Wavelength</a>

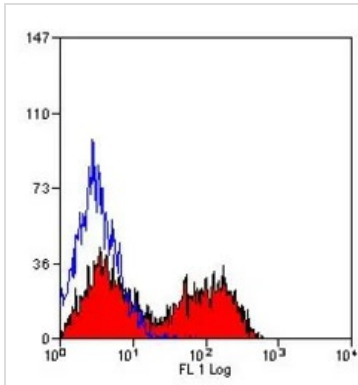


For full product information, images and publications, please visit our [website](#).

For laboratory research use only. Not for any clinical, therapeutic, or diagnostic use in humans or animals. Not for animal or human consumption.

**Note**

Purchasers shall not, and agree not to enable third parties to, analyze, copy, reverse engineer or otherwise attempt to determine the structure or sequence of the product.

**DATA IMAGES**

**GTX43358 FCM Image**

FACS analysis of pig peripheral blood lymphocytes using GTX43358 CD5 antibody [1H6/8] (FITC).



For full product information, images and publications, please visit our [website](#).