

Ly-6B.2 antibody [7/4] (FITC)

Cat. No. GTX43416

| | |
|--------------|------------|
| Host | Rat |
| Clonality | Monoclonal |
| Isotype | IgG2a |
| Applications | FCM |
| Reactivity | Mouse |

References (1)

Package

100 µg

Applications

Application Note

*Optimal dilutions/concentrations should be determined by the researcher.

| Suggested dilution | Recommended dilution |
|--------------------|----------------------|
| FCM | 1/50-1/100 |

Note : Use 10µl of the suggested working dilution to label 10⁶ cells in 100µl.

Not tested in other applications.

Product Note

This antibody recognizes the Ly-6B.2 antigen in 129J; AKR; C57BL/6; C57BL/10; C58; DBA/2; NZB; NZW; SJL; MFI; Swiss (PO) Strains whilst A2G; A/Sn; ASW; BALB/c; C3H/HEH: CBA.T6T6 are negative or demonstrate very weak reactivity (Hirsch and Gordon 1982).

Properties

| | |
|---------------|--|
| Form | Liquid |
| Buffer | PBS, 1% BSA |
| Preservative | 0.09% Sodium azide |
| Storage | Store as concentrated solution. Centrifuge briefly prior to opening vial. Store at 4°C. DO NOT FREEZE. Protect from light. |
| Concentration | 0.5 mg/ml (Please refer to the vial label for the specific concentration.) |
| Immunogen | Cultured bone marrow cells |
| Purification | Protein G purified From tissue culture supernatant |
| Conjugation | Fluorescein isothiocyanate (FITC) Wavelength |

Note

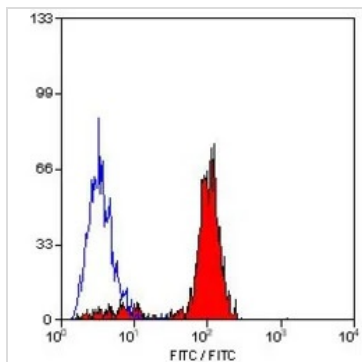
For laboratory research use only. Not for any clinical, therapeutic, or diagnostic use in humans or animals. Not for animal or human consumption.

Purchasers shall not, and agree not to enable third parties to, analyze, copy, reverse engineer or otherwise attempt to determine the structure or sequence of the product.



For full product information, images and publications, please visit our [website](#).

DATA IMAGES



GTX43416 FCM Image

FACS analysis of New Zealand Black mouse peripheral blood granulocytes using GTX43416 Ly-6B.2 antibody [7/4] (FITC).



For full product information, images and publications, please visit our [website](#).

Date 2025 / 12 / 12 Page 2 of 2