

Dectin-1 antibody [2A11] (FITC)

Cat. No. GTX43455

Host	Rat
Clonality	Monoclonal
Isotype	IgG2b
Applications	FCM
Reactivity	Mouse

References (9)

Package

500 µg

Applications

Application Note

*Optimal dilutions/concentrations should be determined by the researcher.

Suggested dilution	Recommended dilution
FCM	1/5-1/50

Note : Use 10µl of the suggested working dilution to label 10⁶ cells in 100µl.

Not tested in other applications.

Properties

Form	Liquid
Buffer	PBS, 1% BSA
Preservative	0.09% Sodium azide
Storage	Store as concentrated solution. Centrifuge briefly prior to opening vial. Store at 4°C. DO NOT FREEZE. Protect from light.
Concentration	0.5 mg/ml (Please refer to the vial label for the specific concentration.)
Immunogen	Dectin-1 transfected NIH3T3 cells and recombinant soluble Dectin-1.
Purification	Protein G purified From tissue culture supernatant
Conjugation	Fluorescein isothiocyanate (FITC) Wavelength

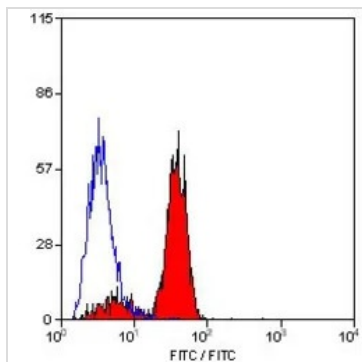
Note

For laboratory research use only. Not for any clinical, therapeutic, or diagnostic use in humans or animals. Not for animal or human consumption.

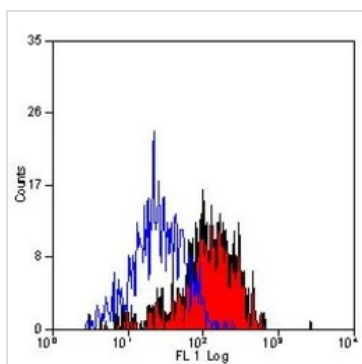
Purchasers shall not, and agree not to enable third parties to, analyze, copy, reverse engineer or otherwise attempt to determine the structure or sequence of the product.



For full product information, images and publications, please visit our [website](#).

DATA IMAGES

GTX43455 FCM Image

FACS analysis of mouse peripheral blood granulocytes using GTX43455 Dectin-1 antibody [2A11] (FITC).


GTX43455 FCM Image

FACS analysis of mouse peritoneal macrophages using GTX43455 Dectin-1 antibody [2A11] (FITC).



For full product information, images and publications, please visit our [website](#).