

CD8 beta antibody [341] (FITC)

Cat. No. GTX43496

Host	Mouse
Clonality	Monoclonal
Isotype	IgG1
Applications	FCM
Reactivity	Rat

Package
100 µg

Applications

Application Note

*Optimal dilutions/concentrations should be determined by the researcher.

Suggested dilution	Recommended dilution
FCM	1/2-1/10

Note : Use 10µl of the suggested working dilution to label 10⁶ cells in 100µl.

Not tested in other applications.

Properties

Form	Liquid
Buffer	PBS, 1% BSA
Preservative	0.09% Sodium azide
Storage	Store as concentrated solution. Centrifuge briefly prior to opening vial. For short-term storage (1-2 weeks), store at 4°C. For long-term storage, aliquot and store at -20°C or below. Avoid multiple freeze-thaw cycles. Protect from light.
Concentration	0.1 mg/ml (Please refer to the vial label for the specific concentration.)
Immunogen	Rat/mouse T cell hybrids expressing CD8
Purification	Protein G purified From tissue culture supernatant
Conjugation	Fluorescein isothiocyanate (FITC) Wavelength

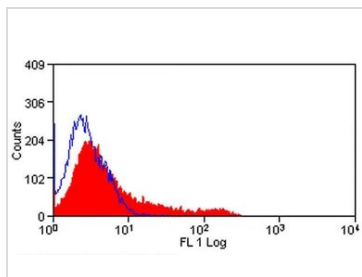
For laboratory research use only. Not for any clinical, therapeutic, or diagnostic use in humans or animals. Not for animal or human consumption.

Note
Purchasers shall not, and agree not to enable third parties to, analyze, copy, reverse engineer or otherwise attempt to determine the structure or sequence of the product.



For full product information, images and publications, please visit our [website](#).

DATA IMAGES

**GTX43496 FCM Image**

FACS analysis of rat splenocytes using GTX43496 CD8 beta antibody [341] (FITC).



For full product information, images and publications, please visit our [website](#).