

SARS-CoV-2 (COVID-19) Spike FFPE 293T cell pellet block

Cat. No. GTX435640

| | |
|---------------------|---------------------|
| Applications | IHC-P (cell pellet) |
| Species | SARS Coronavirus 2 |

References (1)

Package

1 block

PRODUCT

Summary

Block size is 2.2 x 2.2 x 0.5 cm (expected to yield ~40-50 sections of ~4-5 µm thickness), but can vary slightly. Cell pellet consists of 293T cells overexpressing SARS-CoV-2 spike protein (full-length, no tag) fixed with 4% PFA (15 min, room temp) 48 hrs post-transfection, and then embedded in paraffin. Please see the corresponding overexpression cell lysate ([GTX535664](#)).

Applications

Application Note

*Optimal dilutions/concentrations should be determined by the researcher.

Suggested dilution

Recommended dilution

IHC-P (cell pellet)

Assay dependent

Not tested in other applications.

Properties

Storage

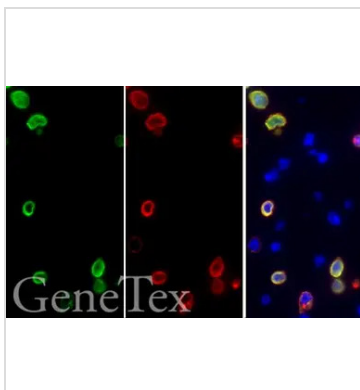
Cool dry at room temperature. 4°C for long term storage.

Note

For laboratory research use only. Not for any clinical, therapeutic, or diagnostic use in humans or animals. Not for animal or human consumption.

Purchasers shall not, and agree not to enable third parties to, analyze, copy, reverse engineer or otherwise attempt to determine the structure or sequence of the product.

DATA IMAGES

**GTX435640 IHC-P (cell pellet) Image**

SARS-CoV-2 (COVID-19) spike antibody detects SARS-CoV-2 (COVID-19) spike (full length) protein by immunohistochemical analysis.

Sample: Paraffin-embedded SARS-CoV-2 (COVID-19) Spike FFPE Cell Pellet Block (GTX435640).

Green: SARS-CoV-2 (COVID-19) spike (full length) protein stained by SARS-CoV-2 (COVID-19) spike antibody (GTX135356) diluted at 1:1000.

Red: SARS-CoV-2 (COVID-19) spike (full length) protein stained by SARS-CoV / SARS-CoV-2 (COVID-19) spike antibody [1A9] (GTX632604) diluted at 1:1000.

Blue: Fluoroshield with DAPI (GTX30920).

Antigen Retrieval: Citrate buffer, pH 6.0, 15 min



For full product information, images and publications, please visit our [website](#).