

SARS-CoV-2 (COVID-19) Envelope FFPE 293T cell pellet Block

Cat. No. GTX435642

Applications	IHC-P (cell pellet)
Species	SARS Coronavirus 2

Package
1 block

PRODUCT

Summary

Block size is 2.2 x 2.2 x 0.5 cm (expected to yield ~40-50 sections of ~4-5 μ m thickness), but can vary slightly. Cell pellet consists of 293T cells overexpressing SARS-CoV-2 Envelope (C-terminal 3x DDDDK-tagged) protein fixed with 4% PFA (15 min, room temp) 48 hrs post-transfection, and then embedded in paraffin.

Applications

Application Note

*Optimal dilutions/concentrations should be determined by the researcher.

Suggested dilution	Recommended dilution
IHC-P (cell pellet)	Assay dependent

Not tested in other applications.

Properties

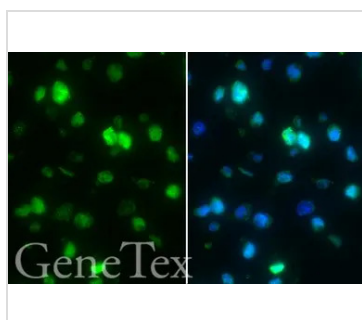
Storage Cool dry at room temperature. 4°C for long term storage.

Note

For laboratory research use only. Not for any clinical, therapeutic, or diagnostic use in humans or animals. Not for animal or human consumption.

Purchasers shall not, and agree not to enable third parties to, analyze, copy, reverse engineer or otherwise attempt to determine the structure or sequence of the product.

DATA IMAGES



GTX435642 IHC-P (cell pellet) Image

DDDDK tag antibody detects DDDDK-tagged SARS-CoV-2 (COVID-19) envelope protein by immunohistochemical analysis.

Sample: Paraffin-embedded SARS-CoV-2 (COVID-19) Envelope FFPE Cell Pellet Block (GTX435642).

Green: DDDDK-tagged SARS-CoV-2 (COVID-19) envelope protein stained by DDDDK tag antibody (GTX115043) diluted at 1:500.

Blue: Fluoroshield with DAPI (GTX30920).

Antigen Retrieval: Citrate buffer, pH 6.0, 15 min



For full product information, images and publications, please visit our [website](#).