

SARS-CoV-2 (COVID-19) Membrane FFPE 293T cell pellet Block

Cat. No. GTX435645

Applications	IHC-P (cell pellet)
Species	SARS Coronavirus 2

Package
1 block

PRODUCT

Summary

Block size is 2.2 x 2.2 x 0.5 cm (expected to yield ~40-50 sections of ~4-5 μ m thickness), but can vary slightly. Cell pellet consists of 293T cells overexpressing SARS-CoV-2 Membrane protein (C-terminal 3x DDDDK-tagged) fixed with 4% PFA (15 min, room temp) 48 hrs post-transfection, and then embedded in paraffin.

Applications

Application Note

*Optimal dilutions/concentrations should be determined by the researcher.

Suggested dilution	Recommended dilution
IHC-P (cell pellet)	Assay dependent

Not tested in other applications.

Properties

Storage

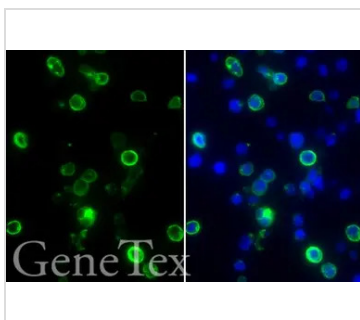
Cool dry at room temperature. 4°C for long term storage.

Note

For laboratory research use only. Not for any clinical, therapeutic, or diagnostic use in humans or animals. Not for animal or human consumption.

Purchasers shall not, and agree not to enable third parties to, analyze, copy, reverse engineer or otherwise attempt to determine the structure or sequence of the product.

DATA IMAGES



GTX435645 IHC-P (cell pellet) Image

DDDDK tag antibody detects DDDDK-tagged SARS-CoV-2 (COVID-19) membrane protein by immunohistochemical analysis.

Sample: Paraffin-embedded SARS-CoV-2 (COVID-19) Membrane FFPE Cell Pellet Block (GTX435645).

Green: DDDDK-tagged SARS-CoV-2 (COVID-19) membrane protein stained by DDDDK tag antibody (GTX115043) diluted at 1:500.

Blue: Fluoroshield with DAPI (GTX30920).

Antigen Retrieval: Citrate buffer, pH 6.0, 15 min



For full product information, images and publications, please visit our [website](https://www.genetex.com).