

## 293T FFPE Cell Pellet Block

Cat. No. GTX435670

**Applications** IHC-P (cell pellet)**Species** Human**Package**

1 block

## PRODUCT

**Summary**

Block size is 2.2 x 2.2 x 0.5 cm (expected to yield ~40-50 sections of ~4-5  $\mu$ m thickness), but can vary slightly. Cell pellet consists of 293T cells fixed with 4% PFA (15 min, room temp), and then embedded in paraffin. Please see the corresponding overexpression cell lysate ([GTX535673](#))

## Applications

**Application Note**

\*Optimal dilutions/concentrations should be determined by the researcher.

**Suggested dilution****Recommended dilution**

IHC-P (cell pellet)

Assay dependent

Not tested in other applications.

## Properties

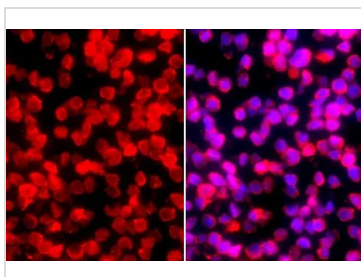
**Storage**

Cool dry at room temperature. 4°C for long term storage.

**Note**

For *In vitro* laboratory use only. Not for any clinical, therapeutic, or diagnostic use in humans or animals. Not for animal or human consumption.

## DATA IMAGES

**GTX435670 IHC-P (cell pellet) Image**

GAPDH antibody [GT239] detects GAPDH protein at cytoplasm by immunohistochemical analysis.

Sample: 293T FFPE Cell Pellet Block (GTX435670).

Red: GAPDH stained by GAPDH antibody [GT239] (GTX435670) diluted at 1:500.

Blue: Fluoroshield with DAPI (GTX30920).

Antigen Retrieval: Citrate buffer, pH 6.0, 15 min



For full product information, images and publications, please visit our [website](#).