

SARS-CoV-2 (COVID-19) Spike FFPE 293T cell pellet slide

Cat. No. GTX435744

Applications	IHC-P (cell pellet)
Species	SARS Coronavirus 2

References (1)

Package

5 slide

PRODUCT

Summary

Cell pellet sections are 4 µm in thickness, and mounted on positively charged glass slides. Cell pellet consists of 293T cells overexpressing SARS-CoV-2 spike protein (full-length, no tag) fixed with 4% PFA (15 min, room temp) 48 hrs post-transfection, and then embedded in paraffin. Please see the corresponding overexpression cell lysate ([GTX535664](#)) and FFPE cell pellet block ([GTX435640](#)).

Applications

Application Note

*Optimal dilutions/concentrations should be determined by the researcher.

Suggested dilution

Recommended dilution

IHC-P (cell pellet)

Assay dependent

Not tested in other applications.

Properties

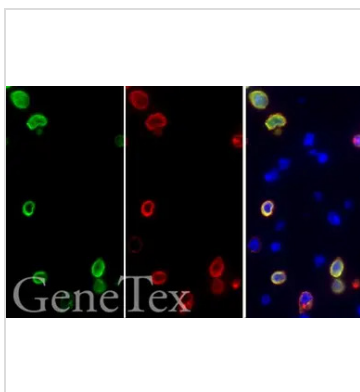
Storage

Cool dry at room temperature. 4°C for long term storage.

Note

For *In vitro* laboratory use only. Not for any clinical, therapeutic, or diagnostic use in humans or animals. Not for animal or human consumption.

DATA IMAGES



GTX435744 IHC-P (cell pellet) Image

SARS-CoV-2 (COVID-19) spike antibody detects SARS-CoV-2 (COVID-19) spike (full length) protein by immunohistochemical analysis.

Sample: Paraffin-embedded SARS-CoV-2 (COVID-19) Spike FFPE 293T cell pellet slide (GTX435744).

Green: SARS-CoV-2 (COVID-19) spike (full length) protein stained by SARS-CoV-2 (COVID-19) spike antibody (GTX135356) diluted at 1:1000.

Red: SARS-CoV-2 (COVID-19) spike (full length) protein stained by SARS-CoV / SARS-CoV-2 (COVID-19) spike antibody [1A9] (GTX632604) diluted at 1:1000.

Blue: Fluoroshield with DAPI (GTX30920).

Antigen Retrieval: Citrate buffer, pH 6.0, 15 min



For full product information, images and publications, please visit our [website](#).