

## CD4 antibody [RM4-5] (FITC)

**Cat. No. GTX43601**

<b>Host</b>	Rat
<b>Clonality</b>	Monoclonal
<b>Isotype</b>	IgG2a
<b>Applications</b>	FCM
<b>Reactivity</b>	Mouse

**Package**  
100 µg

## PRODUCT

**Summary**

The RM4-5 antibody reacts with mouse CD4, a 55 kDa protein which acts as a co-receptor for the T cell receptor (TCR) in its interaction with MHC Class II molecules on antigen-presenting cells. The extracellular domain of CD4 binds to the beta2-domain of MHC Class II, while its cytoplasmic tail provides a binding site for the tyrosine kinase lck, facilitating the signaling cascade that initiates T cell activation. CD4 is typically expressed on thymocytes, certain mature T cell populations such as Th17 and T regulatory (Treg) cells, as well as on dendritic cells.

## Applications

**Application Note**

\*Optimal dilutions/concentrations should be determined by the researcher.

Suggested dilution	Recommended dilution
FCM	Assay dependent

Not tested in other applications.

## Properties

<b>Form</b>	Liquid
<b>Buffer</b>	10mM NaH <sub>2</sub> PO <sub>4</sub> , 150mM NaCl, 0.1% Gelatin
<b>Preservative</b>	0.09% Sodium azide
<b>Storage</b>	Store as concentrated solution. Centrifuge briefly prior to opening vial. Store at 4°C. DO NOT FREEZE. Protect from light.
<b>Concentration</b>	0.5 mg/ml (Please refer to the vial label for the specific concentration.)
<b>Immunogen</b>	BALB/c mouse thymocytes
<b>Purification</b>	Purified by affinity chromatography From tissue culture supernatant
<b>Conjugation</b>	Fluorescein isothiocyanate (FITC) <a href="#">Wavelength</a>

**Note**

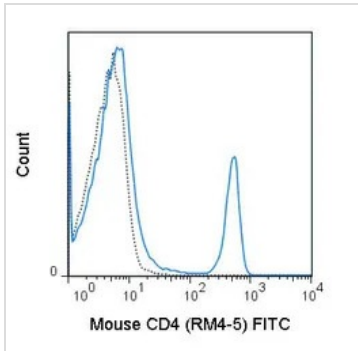
For laboratory research use only. Not for any clinical, therapeutic, or diagnostic use in humans or animals. Not for animal or human consumption.

Purchasers shall not, and agree not to enable third parties to, analyze, copy, reverse engineer or otherwise attempt to determine the structure or sequence of the product.



For full product information, images and publications, please visit our [website](#).

## DATA IMAGES

**GTX43601 FCM Image**

FACS analysis of C57Bl/6 splenocytes using GTX43601 CD4 antibody [RM4-5] (FITC).

Solid line : Primary antibody

Dashed line : FITC rat IgG2a isotype control

Antibody amount : 0.25  $\mu$ g



For full product information, images and publications, please visit our [website](#).