

## Integrin beta 1 / CD29 antibody [HM beta 1-1] (FITC)

Cat. No. GTX43634

Host	Armenian Hamster
Clonality	Monoclonal
Isotype	IgG
Applications	FCM
Reactivity	Mouse, Rat

Package

25 µg

## Applications

## Application Note

\*Optimal dilutions/concentrations should be determined by the researcher.

Suggested dilution	Recommended dilution
FCM	Neat-1/10

**Note : Use 10µl of the suggested working dilution to label 10<sup>6</sup> cells in 100µl.**

Not tested in other applications.

## Properties

Form	Liquid
Buffer	PBS, 1% BSA
Preservative	0.09% Sodium azide
Storage	Store as concentrated solution. Centrifuge briefly prior to opening vial. For short-term storage (1-2 weeks), store at 4°C. For long-term storage, aliquot and store at -20°C or below. Avoid multiple freeze-thaw cycles. Protect from light.
Concentration	0.1 mg/ml (Please refer to the vial label for the specific concentration.)
Immunogen	Purified mouse Integrin beta 1 / CD29 antigen.
Purification	Protein G purified
Conjugation	Fluorescein isothiocyanate (FITC) <a href="#">Wavelength</a>

## Note

For laboratory research use only. Not for any clinical, therapeutic, or diagnostic use in humans or animals. Not for animal or human consumption.

Purchasers shall not, and agree not to enable third parties to, analyze, copy, reverse engineer or otherwise attempt to determine the structure or sequence of the product.



For full product information, images and publications, please visit our [website](#).

## DATA IMAGES

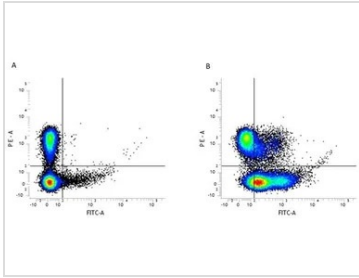

**GTX43634 FCM Image**

Figure A. RPE conjugated rat anti mouse CD3 (GTX43115) and FITC conjugated hamster IgG isotype control.

Figure B. RPE conjugated rat anti mouse CD3 (GTX43115) and FITC conjugated hamster anti mouse CD29 (GTX43634). All experiments performed on red cell lysed murine peripheral blood gated on lymphocytes.



For full product information, images and publications, please visit our [website](#).