

CD169 antibody [3D6.112] (FITC)

Cat. No. GTX43729

Host	Rat
Clonality	Monoclonal
Isotype	IgG2a
Applications	FCM
Reactivity	Mouse

Package

25 µg

Applications

Application Note

*Optimal dilutions/concentrations should be determined by the researcher.

Suggested dilution	Recommended dilution
FCM	Neat-1/5

Note : Use 10µl of the suggested working dilution to label 10⁶ cells in 100µl.

Not tested in other applications.

Properties

Form	Liquid
Buffer	PBS, 1% BSA
Preservative	0.09% Sodium azide
Storage	Store as concentrated solution. Centrifuge briefly prior to opening vial. For short-term storage (1-2 weeks), store at 4°C. For long-term storage, aliquot and store at -20°C or below. Avoid multiple freeze-thaw cycles. Protect from light.
Concentration	0.1 mg/ml (Please refer to the vial label for the specific concentration.)
Immunogen	Purified murine sialoadhesin.
Purification	Protein G purified From tissue culture supernatant
Conjugation	Fluorescein isothiocyanate (FITC) Wavelength

Note

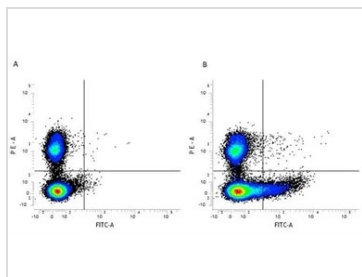
For laboratory research use only. Not for any clinical, therapeutic, or diagnostic use in humans or animals. Not for animal or human consumption.

Purchasers shall not, and agree not to enable third parties to, analyze, copy, reverse engineer or otherwise attempt to determine the structure or sequence of the product.



For full product information, images and publications, please visit our [website](#).

DATA IMAGES



GTX43729 FCM Image

Figure A. RPE conjugated rat anti mouse CD45R and FITC conjugated Rat IgG2a isotype control (GTX74768). Figure B. RPE conjugated rat anti mouse CD45R (1258PE) and FITC conjugated rat anti mouse CD169 (GTX43729). All experiments performed on murine bone marrow



For full product information, images and publications, please visit our [website](#).