

SARS-CoV-2 (COVID-19) Spike (Omicron BA.4 / BA.5) FFPE 293T Cell Pellet Block

Cat. No. GTX437396

Applications	IHC-P (cell pellet)
Species	SARS Coronavirus 2

Package
1 block

PRODUCT

Summary

Block size is 2.2 x 2.2 x 0.5 cm (expected to yield ~40-50 sections of ~4-5 µm thickness), but can vary slightly. Cell pellet consists of 293T cells overexpressing SARS-CoV-2 (COVID-19) Spike (Omicron / BA.4 / BA.5) fixed with 4% PFA (15 min, room temp) 48 hrs post-transfection, and then embedded in paraffin.

Applications

Application Note

*Optimal dilutions/concentrations should be determined by the researcher.

Suggested dilution

Recommended dilution

IHC-P (cell pellet)

Assay dependent

Not tested in other applications.

Properties

Storage

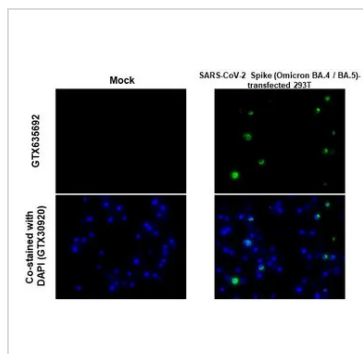
Cool dry at room temperature. 4°C for long term storage.

Note

For laboratory research use only. Not for any clinical, therapeutic, or diagnostic use in humans or animals. Not for animal or human consumption.

Purchasers shall not, and agree not to enable third parties to, analyze, copy, reverse engineer or otherwise attempt to determine the structure or sequence of the product.

DATA IMAGES



GTX437396 IHC-P (cell pellet) Image

SARS-CoV-2 (COVID-19) Spike RBD antibody [HL257] detects SARS-CoV-2 (COVID-19) Spike protein by immunohistochemical analysis.

Sample: Paraffin-embedded Mock (GTX435670) and SARS-CoV-2 (COVID-19) Spike (Omicron BA.4 / BA.5) FFPE 293T Cell Pellet Block (GTX437396).

Green: SARS-CoV-2 (COVID-19) Spike RBD stained by SARS-CoV-2 (COVID-19) Spike RBD antibody [HL257] (GTX635692) diluted at 1:1000.

Blue: Fluoroshield with DAPI (GTX30920).

Antigen Retrieval: Citrate buffer, pH 6.0, 15 min



For full product information, images and publications, please visit our [website](https://www.genetex.com).