

# CD11b antibody [CC126] (FITC)

**Cat. No. GTX43767**

<b>Host</b>	Mouse
<b>Clonality</b>	Monoclonal
<b>Isotype</b>	IgG2b
<b>Application</b>	FACS
<b>Reactivity</b>	Goat, Sheep, Bovine

Reference ( 1 )  
Package  
100 µg

## APPLICATION

### Application Note

\*Optimal dilutions/concentrations should be determined by the researcher.

Suggested dilution	Recommended dilution
FACS	1/10

**Note : Use 10µl of the suggested working dilution to label 10<sup>6</sup> cells in 100µl.**

Not tested in other applications.

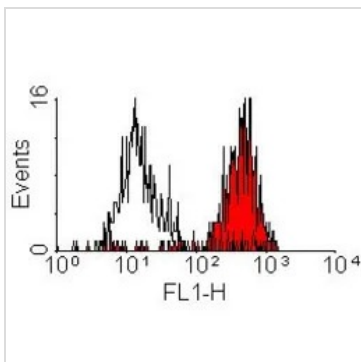
## PROPERTIES

<b>Form</b>	Liquid
<b>Buffer</b>	PBS, 1% BSA
<b>Preservative</b>	0.09% Sodium azide
<b>Storage</b>	Store as concentrated solution. Centrifuge briefly prior to opening vial. For short-term storage (1-2 weeks), store at 4°C. For long-term storage, aliquot and store at -20°C or below. Avoid multiple freeze-thaw cycles. Protect from light.
<b>Concentration</b>	0.1 mg/ml (Please refer to the vial label for the specific concentration.)
<b>Purification</b>	Protein G purified From tissue culture supernatant
<b>Conjugation</b>	Fluorescein isothiocyanate (FITC)
<b>Note</b>	For laboratory research use only. Not for any clinical, therapeutic, or diagnostic use in humans or animals. Not for animal or human consumption.  Purchasers shall not, and agree not to enable third parties to, analyze, copy, reverse engineer or otherwise attempt to determine the structure or sequence of the product.



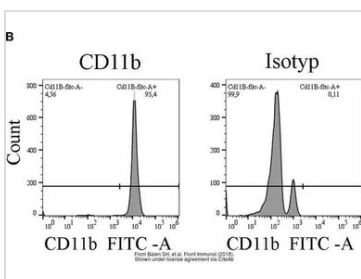
For full product information, images and publications, please visit our [website](#).

DATA IMAGES



**GTX43767 FACS Image**

FACS analysis of bovine peripheral blood monocytes using GTX43767 CD11b antibody [CC126] (FITC).



**GTX43767 FACS Image**

The data was published in the journal Front Immunol in 2018. [PMID: 30050531](https://doi.org/10.3389/fimm.2018.00531)



For full product information, images and publications, please visit our [website](https://www.genetex.com).