

Bu-1A antibody [L22] (FITC)

Cat. No. GTX43786

Host	Mouse
Clonality	Monoclonal
Isotype	IgG1
Applications	FCM
Reactivity	Chicken, Quail

Package
50 µg

Applications

Application Note

*Optimal dilutions/concentrations should be determined by the researcher.

Suggested dilution	Recommended dilution
FCM	1/20-1/80

Note : A permeabilization step is not required.

Not tested in other applications.

Product Note This antibody reacts with quail Bu-1 but does not appear reactive with either turkey or guinea fowl tissues (Igyarto et al. 2008)

Properties

Form	Liquid
Buffer	PBS, 1% BSA
Preservative	0.09% Sodium azide
Storage	Store as concentrated solution. Centrifuge briefly prior to opening vial. For short-term storage (1-2 weeks), store at 4°C. For long-term storage, aliquot and store at -20°C or below. Avoid multiple freeze-thaw cycles. Protect from light.
Concentration	0.1 mg/ml (Please refer to the vial label for the specific concentration.)
Immunogen	Chicken bursa cells
Purification	Protein G purified From tissue culture supernatant
Conjugation	Fluorescein isothiocyanate (FITC) Wavelength

Note

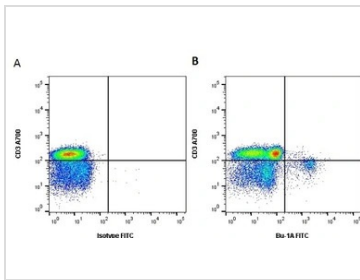
For laboratory research use only. Not for any clinical, therapeutic, or diagnostic use in humans or animals. Not for animal or human consumption.

Purchasers shall not, and agree not to enable third parties to, analyze, copy, reverse engineer or otherwise attempt to determine the structure or sequence of the product.



For full product information, images and publications, please visit our [website](#).

DATA IMAGES



GTX43786 FCM Image

FCM analysis of peripheral blood mononuclear cells extracted from whole chicken blood gated on lymphocytes in the presence of 10% chicken serum using GTX43786 Bu-1A antibody [L22] (FITC).

A. CD3 antibody (Alexa Fluor 700) and Mouse IgG1 isotype control (FITC), GTX76638

B. CD3 antibody (Alexa Fluor 700) and Bu-1A antibody [L22] (FITC), GTX43786



For full product information, images and publications, please visit our [website](https://www.genetex.com).