

## IL2 antibody (Biotin)

Cat. No. GTX43856

Host	Rabbit
Clonality	Polyclonal
Isotype	IgG
Applications	WB, ELISA
Reactivity	Human

Package

50 µg

## Applications

## Application Note

\*Optimal dilutions/concentrations should be determined by the researcher.

Suggested dilution	Recommended dilution
WB	0.1-0.2µg/ml
ELISA	0.25-1µg/ml

Not tested in other applications.

**Calculated MW** 18 kDa. ( [Note](#) )

**Product Note** This antibody may be used in a direct ELISA or as the detection reagent in a sandwich ELISA with GTX39952.

## Properties

Form	Liquid
Buffer	PBS
Preservative	No preservatives
Storage	Store as concentrated solution. Centrifuge briefly prior to opening vial. For short-term storage (1-2 weeks), store at 4°C. For long-term storage, aliquot and store at -20°C or below. Avoid multiple freeze-thaw cycles.
Concentration	50 µg/ml (Please refer to the vial label for the specific concentration.)
Immunogen	Recombinant human IL-2
Purification	Purified by affinity chromatography
Conjugation	Biotin

## Note

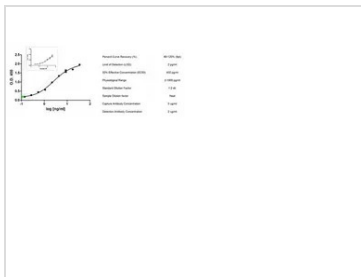
For laboratory research use only. Not for any clinical, therapeutic, or diagnostic use in humans or animals. Not for animal or human consumption.

Purchasers shall not, and agree not to enable third parties to, analyze, copy, reverse engineer or otherwise attempt to determine the structure or sequence of the product.



For full product information, images and publications, please visit our [website](#).

## DATA IMAGES



**GTX43856 ELISA Image**

Sandwich ELISA analysis of human interleukin-2 using Rat anti Human IL-2 as a capture reagent and biotinylated Rabbit anti Human IL-2 (GTX43856) as a detection reagent. In the enlargement, neat serum (orange) and neat plasma (green) samples, low levels of human IL-2 (~1pg/ml) are detected.



For full product information, images and publications, please visit our [website](#).

Date 2026 / 02 / 03 Page 2 of 2