

CD26 antibody [H207-1082] (Biotin)

Cat. No. GTX43955

Host	Rat
Clonality	Monoclonal
Isotype	IgG2a
Applications	FCM
Reactivity	Mouse

Package
100 µg

Applications

Application Note

*Optimal dilutions/concentrations should be determined by the researcher.

Suggested dilution	Recommended dilution
FCM	Neat

Note : Use 10µl of the suggested working dilution to label 10⁶ cells in 100µl.

Not tested in other applications.

Properties

Form	Liquid
Buffer	PBS, 1% BSA
Preservative	0.09% Sodium azide
Storage	Store as concentrated solution. Centrifuge briefly prior to opening vial. For short-term storage (1-2 weeks), store at 4°C. For long-term storage, aliquot and store at -20°C or below. Avoid multiple freeze-thaw cycles.
Concentration	0.1 mg/ml (Please refer to the vial label for the specific concentration.)
Purification	Protein G purified From tissue culture supernatant
Conjugation	Biotin

Note

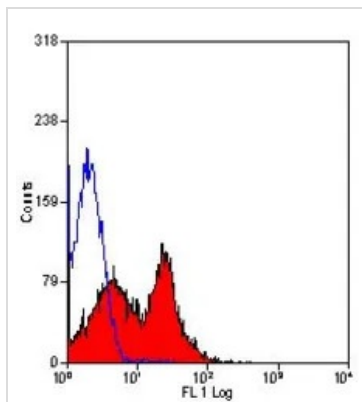
For laboratory research use only. Not for any clinical, therapeutic, or diagnostic use in humans or animals. Not for animal or human consumption.

Purchasers shall not, and agree not to enable third parties to, analyze, copy, reverse engineer or otherwise attempt to determine the structure or sequence of the product.



For full product information, images and publications, please visit our [website](#).

DATA IMAGES



GTx43955 FCM Image

FACS analysis of mouse peripheral blood lymphocytes using GTx43955 CD26 antibody [H207-1082] (Biotin).



For full product information, images and publications, please visit our [website](#).

Date 2026 / 02 / 01 Page 2 of 2