

MSR1 antibody [2F8] (Biotin)

Cat. No. GTX43968

Host	Rat
Clonality	Monoclonal
Isotype	IgG2b
Application	FACS
Reactivity	Mouse, Pig, Channel Catfish

Package
100 µg

APPLICATION

Application Note

*Optimal dilutions/concentrations should be determined by the researcher.

Suggested dilution	Recommended dilution
FACS	Neat

Note : Use 10µl of the suggested working dilution to label 10⁶ cells in 100µl.

Not tested in other applications.

Calculated MW	50 kDa. (Note)
Product Note	Clone 2F8 is unsuitable for use with the C57BL/6 mouse strain (Daugherty et al. 2000).

PROPERTIES

Form	Liquid
Buffer	PBS, 1% BSA
Preservative	0.09% Sodium azide
Storage	Store as concentrated solution. Centrifuge briefly prior to opening vial. For short-term storage (1-2 weeks), store at 4°C. For long-term storage, aliquot and store at -20°C or below. Avoid multiple freeze-thaw cycles.
Concentration	0.1 mg/ml (Please refer to the vial label for the specific concentration.)
Immunogen	Raw 264 cell line.
Purification	Protein G purified From tissue culture supernatant
Conjugation	Biotin

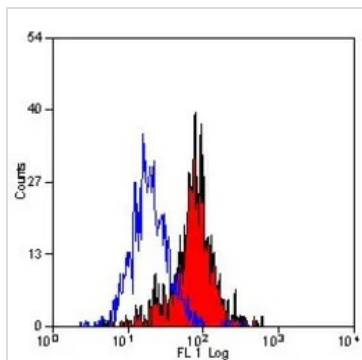
Note

For laboratory research use only. Not for any clinical, therapeutic, or diagnostic use in humans or animals. Not for animal or human consumption.

Purchasers shall not, and agree not to enable third parties to, analyze, copy, reverse engineer or otherwise attempt to determine the structure or sequence of the product.



For full product information, images and publications, please visit our [website](#).

DATA IMAGES

GTX43968 FACS Image

FACS analysis of mouse peritoneal macrophages using GTX43968 MSR1 antibody [2F8] (Biotin).



For full product information, images and publications, please visit our [website](#).