

CD3 antibody [KT3] (APC)

Cat. No. GTX44015

Host	Rat
Clonality	Monoclonal
Isotype	IgG2a
Application	FACS
Reactivity	Mouse

Package
100 test

APPLICATION

Application Note

*Optimal dilutions/concentrations should be determined by the researcher.

Suggested dilution	Recommended dilution
FACS	Neat

Note : Use 10µl of the suggested working dilution to label 10⁶ cells or 100µl whole blood.

Not tested in other applications.

PROPERTIES

Form	Liquid
Buffer	PBS, 1% BSA, 5% Sucrose
Preservative	0.09% Sodium azide
Storage	Store as concentrated solution. Centrifuge briefly prior to opening vial. Store at 4°C. DO NOT FREEZE. Protect from light.
Concentration	Batch dependent (Please refer to the vial label for the specific concentration.)
Immunogen	CBAT6 thymocytes.
Purification	Protein A purified From tissue culture supernatant
Conjugation	Allophycocyanin (APC)

Note

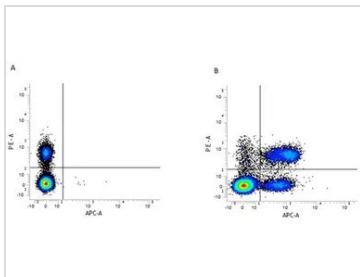
For laboratory research use only. Not for any clinical, therapeutic, or diagnostic use in humans or animals. Not for animal or human consumption.

Purchasers shall not, and agree not to enable third parties to, analyze, copy, reverse engineer or otherwise attempt to determine the structure or sequence of the product.



For full product information, images and publications, please visit our [website](#).

DATA IMAGES



GTX44015 FACS Image

Figure A. RPE conjugated rat anti mouse CD4 (GTX43089) and APC conjugated Rat IgG2a isotype control.

Figure B. RPE conjugated rat anti mouse CD4 (GTX43089) and APC conjugated rat anti mouse CD3

(GTX44015). All experiments performed on murine splenocytes.



For full product information, images and publications, please visit our [website](#).