

alpha Smooth Muscle Actin antibody [α sm-1]

Cat. No. GTX44499

Host	Mouse
Clonality	Monoclonal
Isotype	IgG2a
Applications	IHC-P
Reactivity	Human

Package
500 μ l

Applications

Application Note

*Optimal dilutions/concentrations should be determined by the researcher.

Suggested dilution	Recommended dilution
IHC-P	1:50

Note : The recommended fixative is 10% neutral-buffered formalin for paraffin-embedded tissue sections.

Not tested in other applications.

Product Note

Reactive with smooth muscle cells in blood vessel walls, gut wall, myometrium and arrectores pili of skin. Myoepithelial cells such as those in breast and salivary gland also contain actin.

Properties

Form	Liquid
Buffer	PBS, 1% BSA
Preservative	0.09% Sodium azide
Storage	Store as concentrated solution. Centrifuge briefly prior to opening vial. Store at 4°C. DO NOT FREEZE.
Concentration	>4.5 μ g/ml (Please refer to the vial label for the specific concentration.)
Immunogen	Synthetic amino terminal decapeptide of alpha smooth muscle isoform of actin.
Purification	IgG fraction
Conjugation	Unconjugated

Note

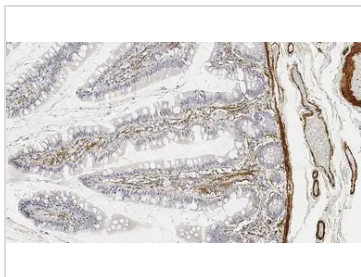
For laboratory research use only. Not for any clinical, therapeutic, or diagnostic use in humans or animals. Not for animal or human consumption.

Purchasers shall not, and agree not to enable third parties to, analyze, copy, reverse engineer or otherwise attempt to determine the structure or sequence of the product.



For full product information, images and publications, please visit our [website](#).

DATA IMAGES



GTx44499 IHC-P Image

IHC-P analysis of human small bowel tissue using GTx44499 alpha Smooth Muscle Actin antibody [α sm-1]. Note cytoplasmic staining of the muscularis mucosa, vascular walls and smooth muscle fibers in the lamina propria.



For full product information, images and publications, please visit our [website](#).